

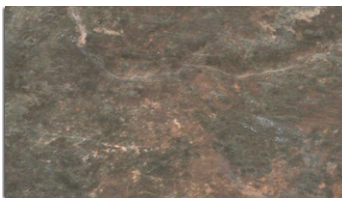
# AFRIKA





 SUBSTANTIAL VARIATION

## Capetown



1094389 - 12"x24" ◆



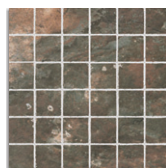
1094381 - 12"x12"



1094393 - 6"x6"



1094385 - 18"x18"



1094405 - 2"x2"  
Mosaic (12"x12")



1094397  
3"x12" Bullnose



1094486  
12"x12" Listello  
Mosaic



1094401  
6"x12"  
Cove Base



1094413  
1"x6" Outside  
Corner



1094409  
1"x6" Inside  
Corner



SUBSTANTIAL VARIATION

## Nairobi



1094391 - 12"x24" ◆



1094387 - 18"x18"



1094407 - 2"x2"  
Mosaic (12"x12")



1094488  
12"x12" Listello  
Mosaic



1094403  
6"x12"  
Cove Base



1094415  
1"x 6" Outside  
Corner



1094411  
1"x 6" Inside  
Corner



1094383 - 12"x12"



1094395 - 6"x6"



1094399  
3"x12" Bullnose



 SUBSTANTIAL VARIATION

## Dakar



1094390 - 12"x24" ◆



1094386 - 18"x18"



1094382 - 12"x12"



1094394 - 6"x6"



1094406 - 2"x2"  
Mosaic (12"x12")



1094487  
12"x12" Listello  
Mosaic



1094398  
3"x12" Bullnose



1094402  
6"x12"  
Cove Base



1094414  
1"x6" Outside  
Corner



1094410  
1"x6" Inside  
Corner



SUBSTANTIAL VARIATION

### Cairo



1094388 - 12"x24" ◆



1094384 - 18"x18"



1094380 - 12"x12"



1094392 - 6"x6"



1094404 - 2"x2" Mosaic (12"x12")



1094485 12"x12" Listello Mosaic



1094396 3"x12" Bullnose



1094400 6"x12" Cove Base



1094412 1"x6" Outside Corner



1094408 1"x6" Inside Corner



**Capetown**



**Nairobi**



**Dakar**



**Cairo**

## COLOR SPECIFICATIONS AND SIZES AVAILABLE

Nominal Size	CAPETOWN	NAIROBI	DAKAR	CAIRO
18"x18"	1094385	1094387	1094386	1094384
12"x24" ♦	1094389	1094391	1094390	1094388
12"x12"	1094381	1094383	1094382	1094380
6"x6"	1094393	1094395	1094394	1094392
2"x2" Mosaic (12"x12")	1094405	1094407	1094406	1094404
12"x12" Listello Mosaic	1094486	1094488	1094487	1094485
6"x12" Cove Base	1094401	1094403	1094402	1094400
1"x6" Inside Corner	1094409	1094411	1094410	1094408
1"x6" Outside Corner	1094413	1094415	1094414	1094412
3"x12" Bullnose	1094397	1094399	1094398	1094396

## PACKAGING

NOMINAL SIZE	METRIC (CM)	THICKNESS (MM)	PIECES PER BOX	SQ. FT PER BOX	WEIGHT PER BOX	UM PER PALLET	WEIGHT PER PALLET
18"x18"	45x45	10 mm	6	13.5	57.4	432	1892
12"x24"	30x60	10 mm	6	12	52.8	576	2589
12"x12"	30x30	10 mm	13	13	55.3	624	2709
6"x6"	15x15	10 mm	30	7.5	31.13	540	2294
2"x2" Mosaic (12"x12")	30x30	10 mm	10	10	39	450	1810
12"x12" Listello Mosaic	30x30	10 mm	10	10	39	450	1810
6"x12" Cove Base	15x30	8 mm	10	-	17.5	-	-
1"x6" Inside Corner	2.5x15	8 mm	4	.16	1	-	-
1"x6" Outside Corner	2.5x15	8 mm	4	.16	1	-	-
3"x12" Bullnose	7.5x30	10 mm	12	3	12.5	2016	2155

ALL OTHER SIZES WILL BE PACKAGED AS ORDERED.  
PLEASE CONTACT FLORIM CUSTOMER SERVICE AT 877-FLORIM1 FOR PACKAGING INFORMATION.

♦ MINIMUM GROUT SIZE RECOMMENDED = 5 MM (OR APPROX. 3/16" IF STAGGERED TILE PLACEMENT, WE RECOMMEND USING A 30% OFFSET. IF SPECIFIED BRICK PATTERN WITH 1/2 PATTERN MANDATORY, A BIGGER GROUT IS RECOMMENDED TO HIDE IMPERFECTIONS OF INSTALLATION (MINIMUM 1/4").

## SHADE VARIATION

**V1**  
UNIFORM APPEARANCE  
Differences among pieces from the same production run are minimal.

**V2**  
SLIGHT VARIATION  
Clearly distinguishable differences in texture and/or pattern with similar colors.

**V3**  
MODERATE VARIATION  
While the colors present on a single piece of tile will be indicative of the colors to be expected on the other tiles, the amount of colors on each piece will vary significantly.

**V4**  
SUBSTANTIAL VARIATION  
Random color differences from tile to tile, so that one tile may have totally different colors from that on other tiles. Thus, the final installation will be unique.

## TECHNICAL SPECIFICATIONS

Surface Abrasion	PEI	IV	ASTM C1027
Water Absorption		≤ 0.5%	ASTM C373
Chemical Resistance		CLASS A	ASTM 650
Coefficient of Friction	(Dry)	≥ 0.75 ♦	ASTM C1028
	(Wet)	≥ 0.70 ♦	ASTM C1028
Stain Resistance		CLASS A	ASTM C1378
Breaking Strength		≥ 400	ASTM C648
Resistance to Freeze		RESISTANT	ASTM C1026
Scratch Hardness		≥ 8	MOHS

ALL FLORIM USA PRODUCTS MEET OR EXCEED ALL STANDARDS IN ANSI A137.1.

♦ DUE TO THE INHERENT NATURE OF FIRED PORCELAIN TILE, IT IS IMPORTANT TO NOTE THAT THE COEFFICIENT OF FRICTION MAY VARY WITHIN AND BETWEEN PRODUCT RUNS.

## WHY PORCELAIN?

There are many reasons to choose impervious porcelain tile over other floor coverings. It offers the largest array of design options and holds its value the longest. In a comparison between the many different flooring options, porcelain tile offers one of the most durable and least expensive options over the lifespan of the building.

### Benefits of Porcelain Tile

- Impervious to water
- Easy to maintain
- Variety of design options
- Environmentally friendly
- Resistant to germs and bacteria
- Fade resistant
- Fire resistant
- Durable - best long-term value vs. other floor coverings

## HOW TO MAINTAIN YOUR PORCELAIN TILE

- Sweep or vacuum regularly.
- Wash with a household cleaner and hot water then rinse with clean water (do not use wax, oil-based, or abrasive cleaners).

Find more care, maintenance, and installation tips at [www.florimusa.com](http://www.florimusa.com)

Colors Shown in this brochure may vary from actual product.  
Final selection should be made from actual product samples.



40% RECYCLED CONTENT



### PROGRESS THAT TOUCHES AND INVESTS IN THE ENTIRE SOCIETY

As a active member of the U.S Green Building Council, Florim spreads awareness to the entire American communities and encourages towards the use of building solutions inspired by environmentally friendly practices. Using Florim products for project implementation, will positively contribute in obtaining scores and points required for earning the LEED certification (Leadership in Energy and Environmental Design).

### A COMMITMENT TO THE DEVELOPMENT OF PRODUCTS FOR A CONSCIOUS BUILDING TRADE

Florim offers products containing recycled material. The adoption of eco-compatible production systems is merit of Italian designs produced in the U.S.

### TECHNICAL DEVELOPMENT THAT CONSIDERS THE NATURAL ENVIRONMENT

Florim commits to the eco-compatible project and translates the same into an avant-gard production process, minimizing the negative impact on the environment.



LEED



**PROGRESS THAT TOUCHES AND INVESTS IN THE ENTIRE SOCIETY**

As a active member of the U.S Green Building Council, Florim spreads awareness to the entire American communities and encourages towards the use of building solutions inspired by environmentally friendly practices.

Using Florim products for project implementation, will positively contribute in obtaining scores and points required for earning the LEED certification (Leadership in Energy and Environmental Design).

**A COMMITMENT TO THE DEVELOPMENT OF PRODUCTS FOR A CONSCIOUS BUILDING TRADE**

Florim offers products containing recycled material. The adoption of eco-compatible production systems is merit of Italian designs produced in the U.S.

**TECHNICAL DEVELOPMENT THAT CONSIDERS THE NATURAL ENVIRONMENT**

Florim commits to the eco-compatible project and translates the same into an avant-guard production process, minimizing the negative impact on the environment.



300 International Blvd. Clarksville, TN 37040  
Toll free: 1-877 - Florim1 (356-7461)  
Phone: 931 645 5100  
[www.florimusa.com](http://www.florimusa.com)

