



GLASS



STONE



METAL



TILE CATALOG

# contents

---

## Tile Series

|                    |         |
|--------------------|---------|
| Opus               | 2 - 4   |
| Structures I       | 5 - 7   |
| Structures II      | 8 - 10  |
| Vista              | 11 - 15 |
| Dimensions         | 16 - 22 |
| Mosaics            | 23 - 26 |
| Platinum           | 27 - 29 |
| Impact             | 30 - 34 |
| Travertine & Glass | 35 - 37 |
| Contours           | 38 - 41 |
| Stone              | 42 - 48 |
| Metal              | 49 - 52 |

---

### Diamond Tech Tiles

5600 Airport Blvd. Suite C | Tampa, FL 33634 | 800-937-9593 | 813-806-2923  
VISIT [DTILES.COM](http://DTILES.COM) FOR MORE PRODUCT INFORMATION.

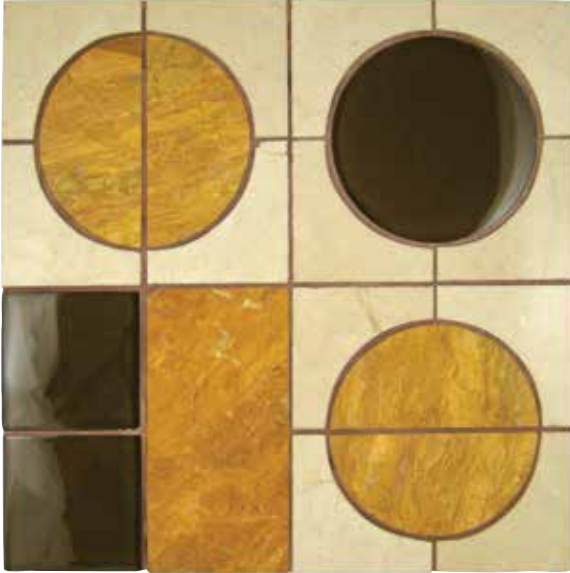




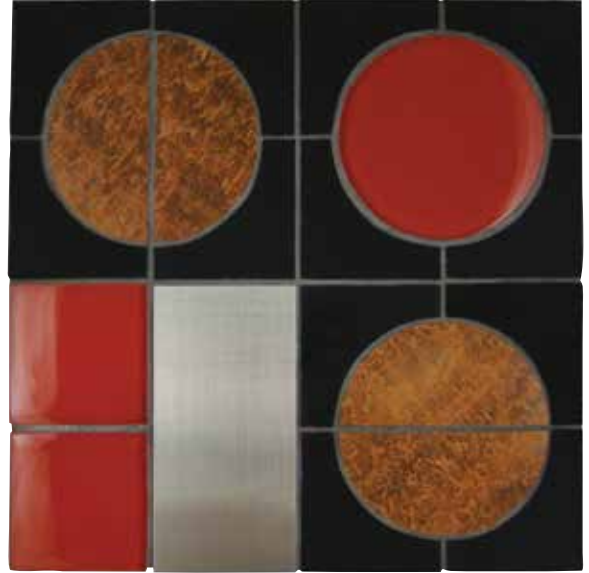
## Opus Series

Stunning mosaic tile that invites you to enjoy life through an irreverent combination of design, color and texture. Opus is a handcrafted tile that breaks from the norm, into an expression of personal style. Rethink your preconceived ideas of tile with the Opus Series.

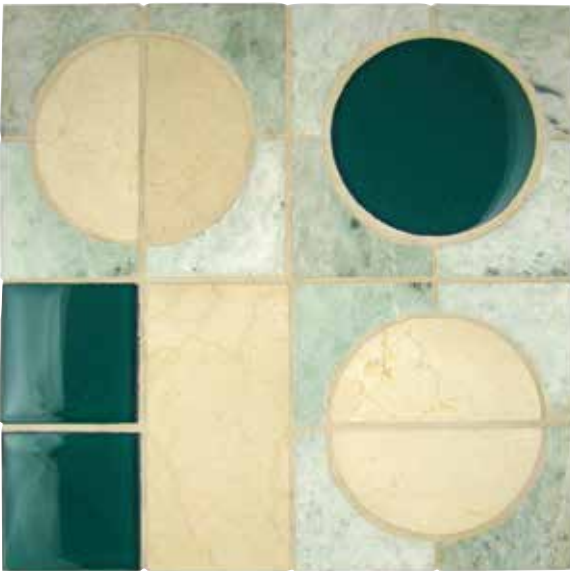
## Opus Series



Carib  
T860  
Chocolate Brown Glass Tile, Crema Marfil and  
Gold Travertine Marble



Intrepid  
T862  
Regal Red Glass Tile, Brushed Stainless Steel,  
Black and Timber Marble



Genesis  
T861  
Contemporary Teal Glass Tile, Crema Marfil and  
Ming Green Marble



Modern  
T863  
True White Glass Tile, Brushed Stainless Steel,  
Apollo Gray and White Statuary Marble

**Sizes:** 12" x 12" / 30 x 30 cm, 0.315" / 0.79 cm (± nominal) thick, Square foot per case: 5, Square foot per sheet: 1, Sheets/Case: 5, Case Weight: 21.40 lbs  
**Mounting:** 12" x 12" sheets mesh-backed mounted | **Grout Joint:** 1/8" (0.32 cm)

For installation instructions visit: [DTiles.com](http://DTiles.com)



# Opus Series Specifications

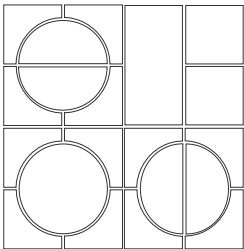
## Application

|                    |                  |                       |                 |
|--------------------|------------------|-----------------------|-----------------|
| Walls/Backsplashes | Residential<br>X | Light Commercial<br>X | Commercial<br>X |
|--------------------|------------------|-----------------------|-----------------|

All tiles may be used as field tile or as decorative inserts. Follow the recommendation of the TCNA (Tile Council of North America) or the MIA (Marble Institute of America). Please reference the specifications that apply to your project. Opus contains metal and is not recommended in shower stalls or surrounds. Nor is it for use in outdoor applications, high moisture areas or bathroom and kitchen floors where water puddling may occur.

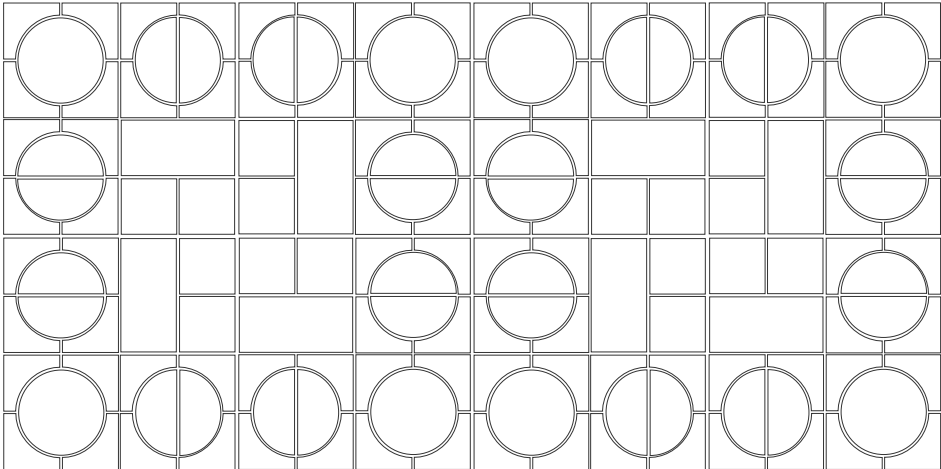
## Sizes

- 12" x 12" / 30 x 30 cm
- 0.315" (0.79 cm) (± nominal) thick
- Mesh-mounted
- Square foot per case: 5
- Square foot per sheet: 1
- Sheets/Case: 5
- Case Weight: 21.40 lbs

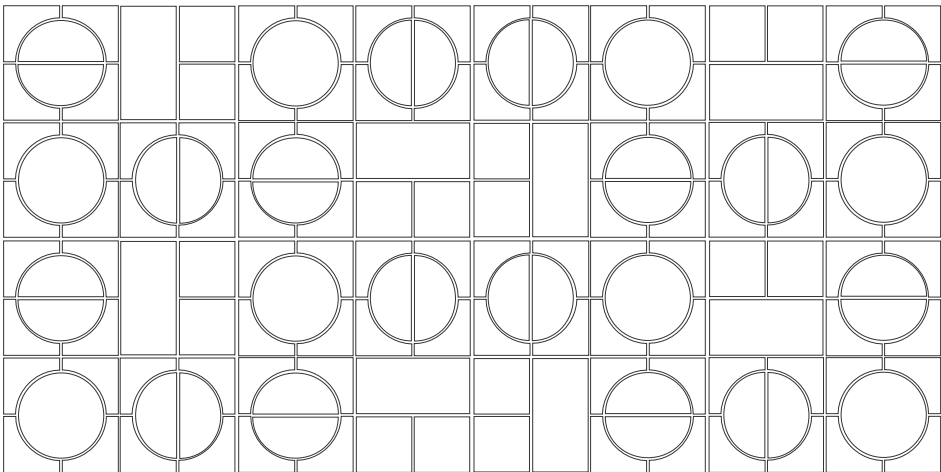


**Grout joint:** 1/8" (0.32 cm). The rounds have 3/16" (0.476 cm) grout joint

Repeating design element I for Opus.



Repeating design element II for Opus.



For installation instructions visit: [DTiles.com](http://DTiles.com)



## Structures Series I

The power of solidity, the energy of integration, the beauty of simplicity; this is Structures I. Structures I possesses warm robust marble combinations with a repeating design element. Whether used as a wall or floor tile, its interconnecting design creates a unique pattern each time for a naturally refined appearance.

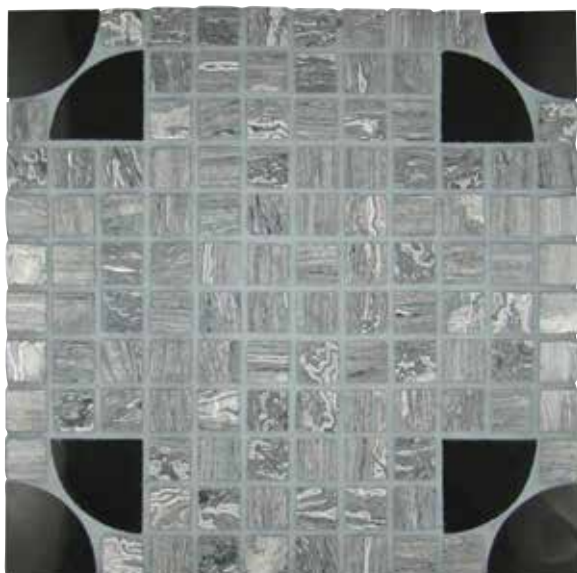
## Structures Series I



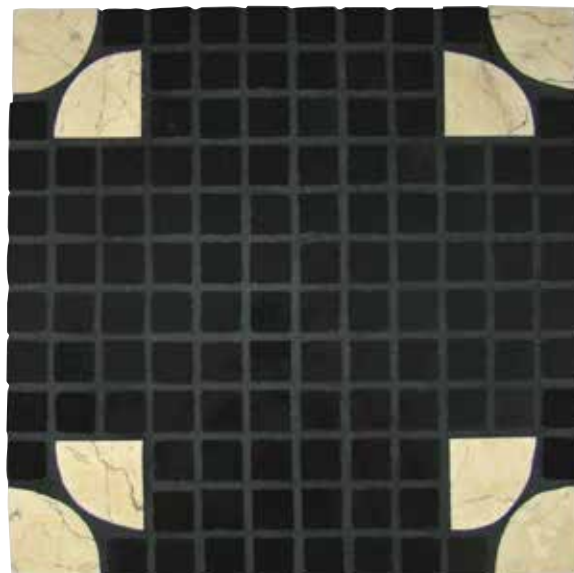
Raffia  
T970  
Crema Marfil and Timber Marble



Almond Brittle  
T972  
Emperador and Golden Travertine Marble



Black Magic  
T971  
Apollo Gray and Black Marble



Art Nouveau  
T973  
Black and Crema Marfil Marble

**Sizes:** 12" x 12" / 30 x 30 cm, 3/8" / 1 cm (± nominal) thick, Square foot per case: 5, Square foot per sheet: 1, Sheets/Case: 5, Case Weight: 25.80 lbs  
**Mounting:** 12" x 12" sheets mesh-backed mounted | **Grout Joint:** 1/8" (0.32 cm)

For installation instructions visit: [DTiles.com](http://DTiles.com)

# Structures Series I Specifications

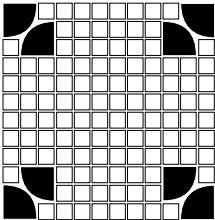
## Application

|                    |             |                  |            |
|--------------------|-------------|------------------|------------|
|                    | Residential | Light Commercial | Commercial |
| Walls/Backsplashes | X           | X                | X          |
| Floors             | X           | X                | X          |

All tiles may be used as field tile or as decorative inserts. Follow the recommendation of the TCNA (Tile Council of North America) or the MIA (Marble Institute of America). Please reference the specifications that apply to your project.

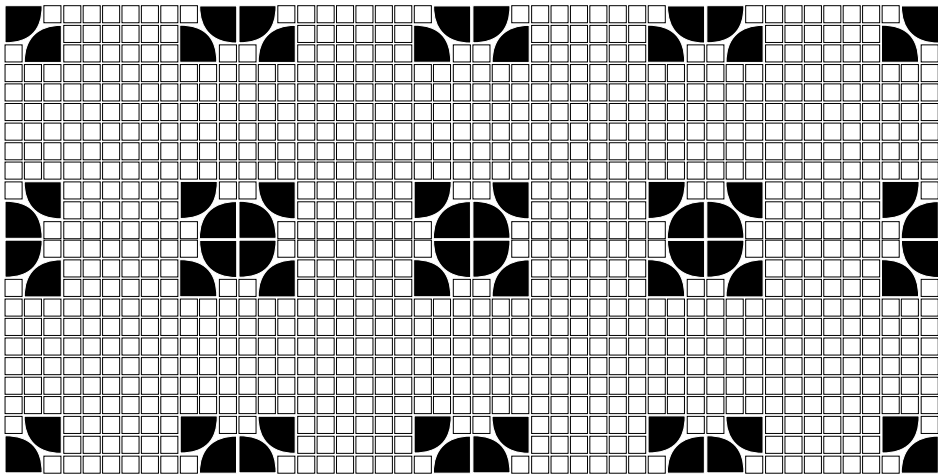
## Sizes

- 12" x 12" / 30 x 30 cm
- 3/8" / 1 cm (± nominal) thick
- Mesh-mounted
- Square foot per case: 5
- Square foot per sheet: 1
- Sheets/Case: 5
- Case Weight: 25.80 lbs

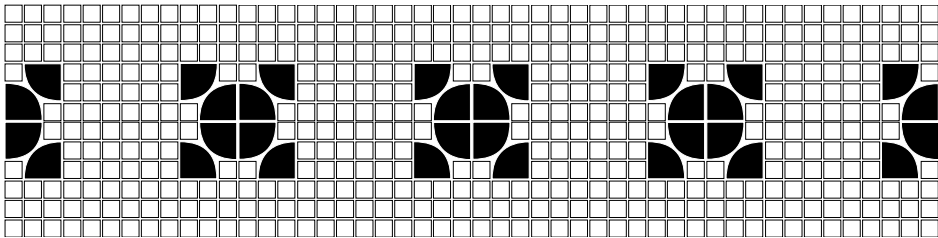


Grout Joint: 1/8" (0.32 cm)

Repeating design element for Structures Series I



Structures Series I can also be used as a border.



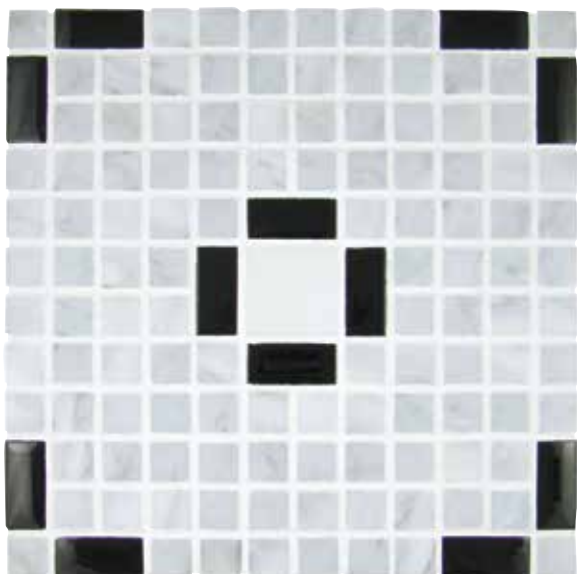




## Structures Series II

An audacious combination of rich earthy marble and dimensional glass tile for a bold brazen new look! Structures II stone and glass combinations highlight the contrast between materials, as they impose their expanding presence in the space. Whether used as a field tile or border, their interconnecting design creates a unique pattern each time.

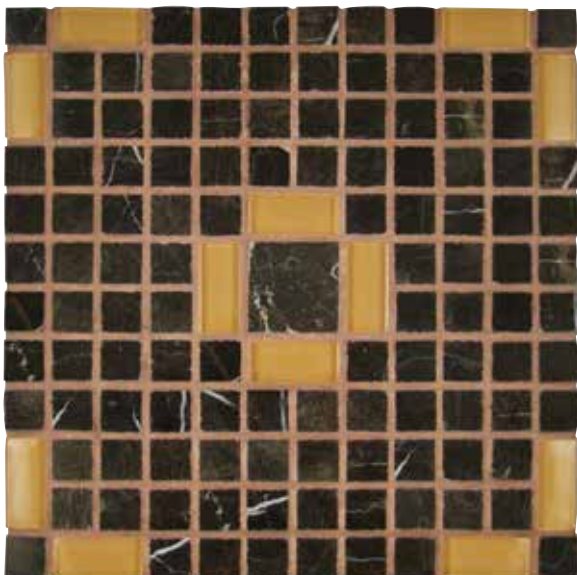
## Structures Series II



Pop Art  
T960  
Black Glass Tile and White Statuary Marble



Desert Spice  
T962  
Teal Glass Tile and Gold Travertine Marble



Oregon Trail  
T961  
Desert Sand Glass Tile and Emperor Marble



Bronco Brown  
T963  
Chocolate Brown Glass Tile and Crema Marfil Marble

**Sizes:** 12" x 12" / 30 x 30 cm, 3/8" / 1 cm (± nominal) thick, Square foot per case: 5, Square foot per sheet: 1, Sheets/Case: 5, Case Weight: 25.80 lbs  
**Mounting:** 12" x 12" sheets mesh-backed mounted | **Grout Joint:** 1/8" (0.32 cm)

For installation instructions visit: [DTiles.com](http://DTiles.com)

# Structures Series II Specifications

## Application

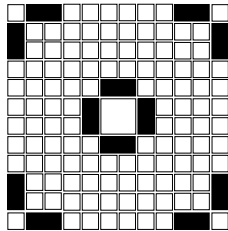
|                    | Residential | Light Commercial | Commercial |
|--------------------|-------------|------------------|------------|
| Walls/Backsplashes | X           | X                | X          |
| Floors*            | X           | X                |            |

All tiles may be used as field tile or as decorative inserts. Follow the recommendation of the TCNA (Tile Council of North America) or the MIA (Marble Institute of America). Please reference the specifications that apply to your project.

\*Light-use flooring: Note the glossy finish if the glass tile may scratch and if tile chips the edges may be sharp.

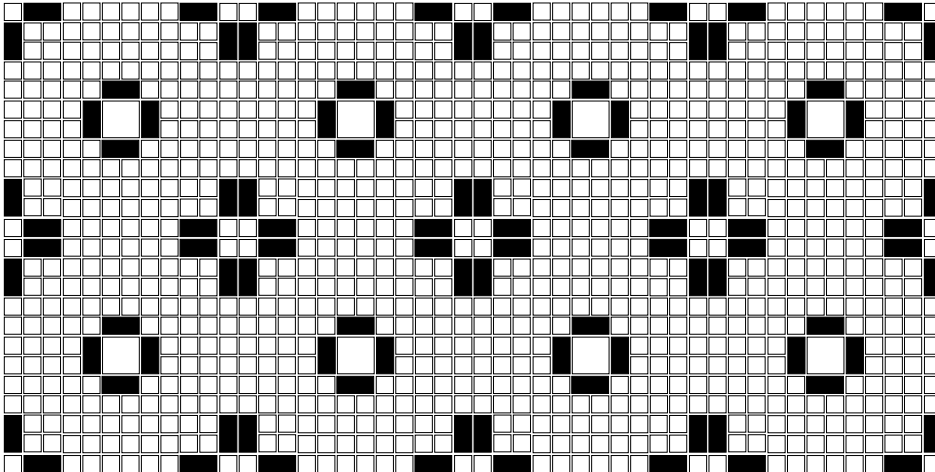
## Sizes

- 12" x 12" / 30 x 30 cm
- 3/8" / 1 cm (± nominal) thick
- Mesh-mounted
- Square foot per case: 5
- Square foot per sheet: 1
- Sheets/Case: 5
- Case Weight: 25.80 lbs

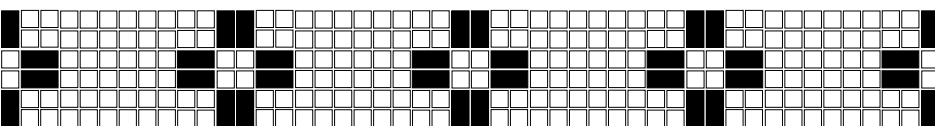
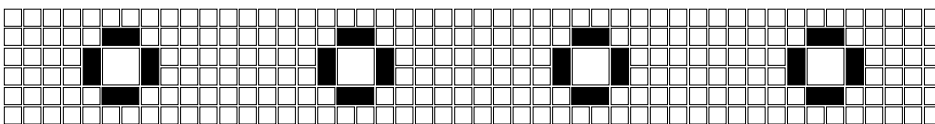


Grout Joint: 1/8" (0.32 cm)

Repeating design element for Structures Series II



Structures Series II can be used as a border.



For installation instructions visit: [DTiles.com](http://DTiles.com)





## Vista Series

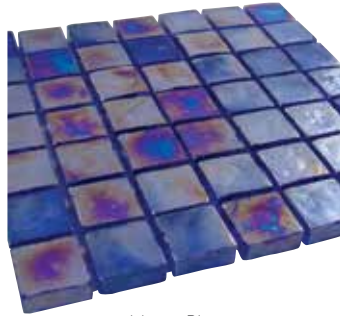
The beauty of Vista lies in its shimmering organic color and tactile surface. This kiln formed glass tile has a soft rippling pattern that harmonizes with its iridescent patina creating visual dimension.

## Vista Series

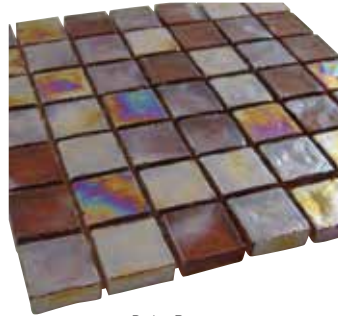
### 3/4in



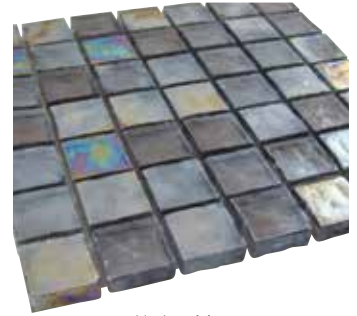
Restful  
TV400



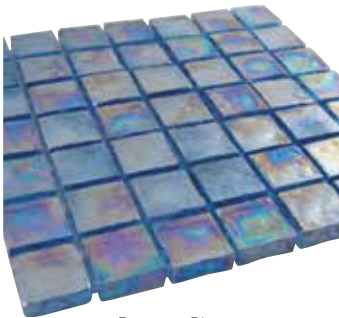
Liberty Blue  
TV401



Relic Brown  
TV403



Harbor Mist  
TV404



Fountain Blue  
TV405

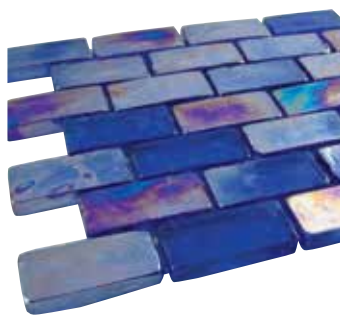


Cocoon  
TV406

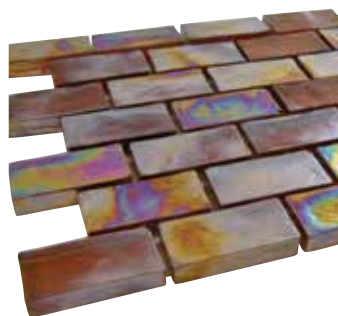
### 1 5/8in x 3/4in



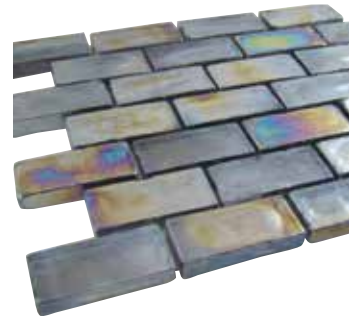
Restful  
TV410



Liberty Blue  
TV411



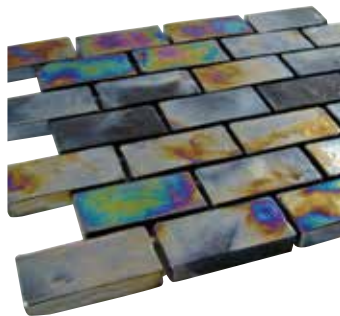
Relic Brown  
TV413



Harbor Mist  
TV414



Fountain Blue  
TV415



Cocoon  
TV416

**Sizes:** 3/4" x 3/4" / 1.9 x 1.9 cm (± nominal), 0.315" (0.79 cm) thick, Square foot per case: 10, Square foot per sheet: 1, Sheets/Case: 10, Case Weight: 32.24 lbs

**Mounting:** 12" x 12" sheets clear-front mounted | **Grout Joint:** 1/8" (0.32 cm)

**Sizes:** 1 5/8" x 3/4" / 4.13 x 1.9 cm (± nominal), 0.315" (0.79 cm) thick, Square foot per case: 10, Square foot per sheet: 1, Sheets/Case: 10, Case Weight: 36.6 lbs

**Mounting:** 12" x 12" sheets clear-front mounted | **Grout Joint:** 1/8" (0.32 cm)



# Vista Series

## 7/8in Rounds



Restful  
TV440



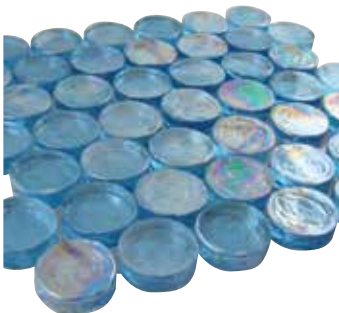
Liberty Blue  
TV441



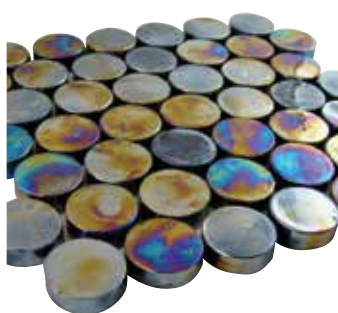
Relic Brown  
TV443



Harbor Mist  
TV444



Fountain Blue  
TV445

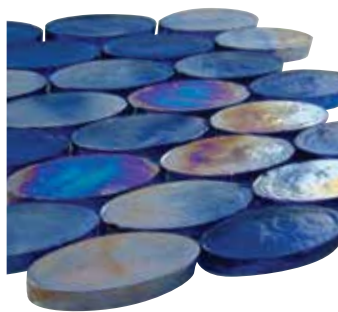


Cocoon  
TV446

## 2in Ovals



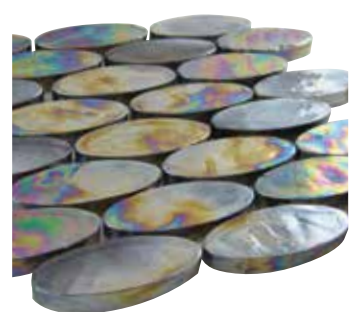
Restful  
TV450



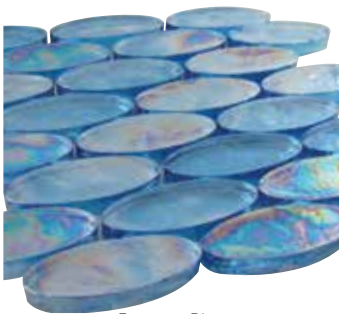
Liberty Blue  
TV451



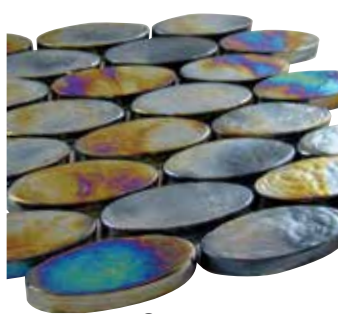
Relic Brown  
TV453



Harbor Mist  
TV454



Fountain Blue  
TV455



Cocoon  
TV456

**Sizes:** 7/8" x 7/8" / 2.2 x 2.2 cm (± nominal), 0.315" (0.79 cm) thick, Square foot per case: 10.5, Square foot per sheet: 1.05, Sheets/Case: 10, Case Weight: 34.86 lbs  
**Mounting:** 12.5" x 12.125" sheets clear-front mounted | **Grout Joint:** 1/8" (0.32 cm)  
**Sizes:** 2" x 3/4" / 5.08 x 1.9 cm (± nominal), 0.315" (0.79 cm) thick, Square foot per case: 8.8, Square foot per sheet: 0.88, Sheets/Case: 10, Case Weight: 39.56 lbs  
**Mounting:** 11.5" x 11" sheets clear-front mounted | **Grout Joint:** 1/8" (0.32 cm)

For installation instructions visit: [DTiles.com](http://DTiles.com)



## Vista Series

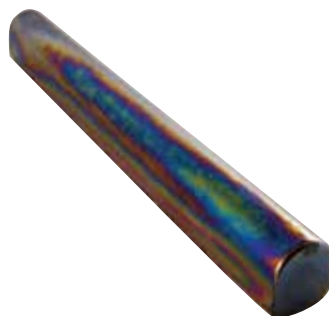
### 8in Pencil - Accents



Restful  
TV460



Liberty Blue  
TV461



Relic Brown  
TV463



Harbor Mist  
TV464



Fountain Blue  
TV465



Cocoon  
TV466



Vista TV454 Harbor Mist

**Sizes:** 7 3/4" x 3/4" / 19.69 x 1.9 cm (± nominal), 0.315" (0.79 cm) thick, Square foot per case: N/A, Square foot per piece: N/A, Pieces/Case: 39, Case Weight: 16.76 lbs | **Mounting:** Loose | **Grout Joint:** 1/8" (0.32 cm)

For installation instructions visit: [DTTiles.com](http://DTTiles.com)

# Vista Series Specifications

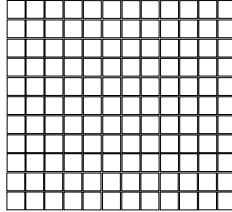
## Application

|                    | Residential | Light Commercial | Commercial |
|--------------------|-------------|------------------|------------|
| Walls/Backsplashes | X           | X                | X          |
| Counters           | X           |                  |            |
| Pool Linings       | X           | X                | X          |

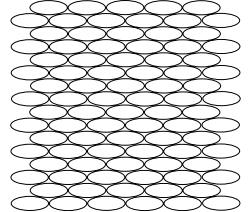
All tiles may be used as field tile or as decorative inserts. Follow the recommendation of the TCNA (Tile Council of North America) Handbook. Please reference the specifications that apply to your project.

## Sizes

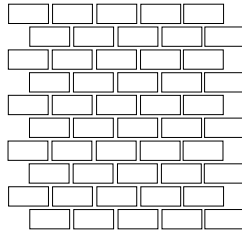
- 3/4" x 3/4" / 1.9 x 1.9 cm (± nominal)  
12" x 12" / 30.4 x 30.4 cm sheets  
0.315" (0.79cm) thick, Clear-front mounted  
Square foot per case: 10  
Sheets/Case: 10  
Case Weight: 32.24 lbs



- Ovals 2" x 3/4" / 5.08 x 1.9 cm (± nominal)  
11.5" x 11" / 29.2 x 27.9 cm sheets  
0.315" (0.79cm) thick, Clear-front mounted  
Square foot per case: 8.8  
Sheets/Case: 10  
Case Weight: 29.56 lbs



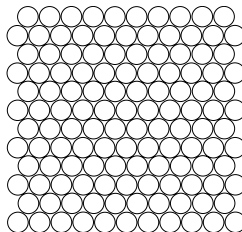
- 1 5/8" x 3/4" / 4.13 x 1.9 cm (± nominal)  
12" x 12" / 30.4 x 30.4 cm sheets  
0.315" (0.79cm) thick, Clear-front mounted  
Square foot per case: 10  
Sheets/Case: 10  
Case Weight: 36.6 lbs



- Pencils - 7 3/4" x 3/4" / 19.69 x 1.9 cm (± nominal)  
0.315" (0.79cm) thick, Loose  
Square foot per case: N/A  
PCS/Case: 39  
Case Weight: 16.76 lbs



- Rounds - 7/8" x 7/8" / 2.2 x 2.2 cm (± nominal)  
12.5" x 12.125" / 31.8 x 30.8 cm sheets  
0.315" (0.79cm) thick, Clear-front mounted  
Square foot per case: 10.5  
Sheets/Case: 10  
Case Weight: 34.86 lbs



Grout Joint: 1/8" (0.32 cm)

## Test Results

|                     | ASTM# | Results   |
|---------------------|-------|-----------|
| Water Absorption    | C373  | 00.00%    |
| Breaking Strength   | C648  | >500 lbs  |
| Scratch Hardness    | MOH'S | >3        |
| Chemical Resistance | C650  | Resistant |



## Dimensions Series

Create the illusion of depth with Dimensions Glass Tile. Bright, radiant color lies beneath the 8mm surface of crystal clear glass. Dimensions Linen offers a versatile neutral color palette, enhanced by a light veining like that of a rich pinstripe fabric.



## Dimensions Series Linen

### Block Pattern



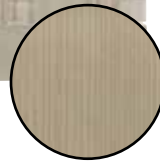
Snow  
T661



Coffee Bean  
T662



Smoke  
T663



Sandstone  
T664



### Chevron



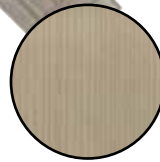
Snow  
T691



Coffee Bean  
T692



Smoke  
T693



Sandstone  
T694



### 5/8in x 6in Stacked



Snow  
T671



Coffee Bean  
T672



Smoke  
T673



Sandstone  
T674



**Sizes:** 11.75" x 11.75" / 29.85 x 29.85 cm, 0.315" (0.79 cm) thick, Square foot per case: 9.6, Square foot per sheet: 0.96, Sheets/Case: 10, Case Weight: 33.4 lbs | **Mounting:** 11.75" x 11.75" sheets mesh-backed mounted | **Grout Joint:** 1/8" (0.32 cm)

**Sizes:** Chevron, 0.315" (0.79 cm) thick, Square foot per case: 9.2, Square foot per sheet: 0.92, Sheets/Case: 10, Case Weight: 33.4 lbs | **Mounting:** Sheets mesh-backed mounted | **Grout Joint:** 1/8" (0.32 cm)

**Sizes:** 5/8" x 6" / 1.59 x 15.24 cm, 0.315" (0.79 cm) thick, Square foot per case: 9.8, Square foot per sheet: 0.98, Sheets/Case: 10, Case Weight: 33.3 lbs | **Mounting:** 11.94" x 11.88" sheets mesh-backed mounted | **Grout Joint:** 1/8" (0.32 cm)

For installation instructions visit: [DTTiles.com](http://DTTiles.com)

## Dimensions Series

### Linen - Subway



Snow  
T667 (3 x 6), T677 (2 x 12)  
T681 (3 x 12), T687 (4 x 16), (6 x 12)\*



Coffee Bean  
T668 (3 x 6), T678 (2 x 12)  
T682 (3 x 12), T688 (4 x 16), (6 x 12)\*

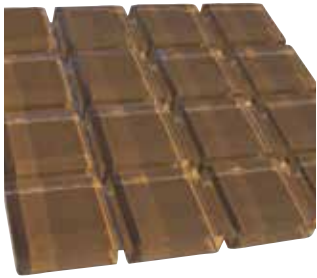


Smoke  
T669 (3 x 6), T679 (2 x 12)  
T683 (3 x 12), T689 (4 x 16), (6 x 12)\*



Sandstone  
T670 (3 x 6), T680 (2 x 12)  
T684 (3 x 12), T690 (4 x 16), (6 x 12)\*

### 1in x 1in



Chocolate  
T520



Desert  
T523



True White  
T524



Black  
T459



Red  
T455



Light Green  
T452



Teal  
T454



Blue  
T451

### 1in x 2in Brick



Chocolate  
T525



Desert  
T528



True White  
T529



Black  
T469

See page 21 for Linen Subway specifications.

**Sizes:** 1" x 1" / 2.54 x 2.54 cm (± nominal), 0.315" (0.79 cm) thick, Square foot per case: 11.2, Square foot per sheet: 1.12, Sheets/Case: 10, Case Weight: 39.55 lbs

**Mounting:** 12.69" x 12.69" sheets mesh-backed mounted | **Grout Joint:** 1/8" (0.32 cm)

**Sizes:** 1" x 2" / 2.54 x 5.08 cm (± nominal), 0.315" (0.79 cm) thick, Square foot per case: 10.7, Square foot per sheet: 1.07, Sheets/Case: 10, Case Weight: 39.55

**Mounting:** 12.19" x 12.19" sheets mesh-backed mounted | **Grout Joint:** 1/8" (0.32 cm)

## Dimensions Series

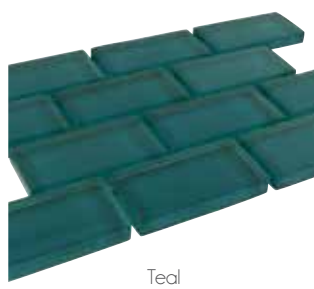
### 1in x 2in Brick



Red  
T465



Light Green  
T462



Teal  
T464



Blue  
T461

### 1in x 1in Mixes

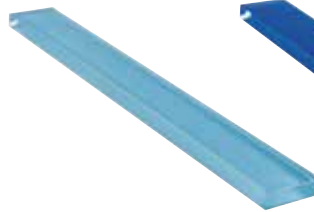


Tribal  
T505

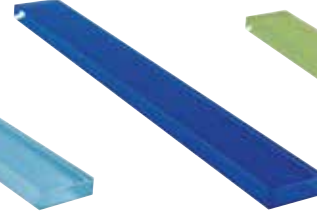


Mountain Air  
T509

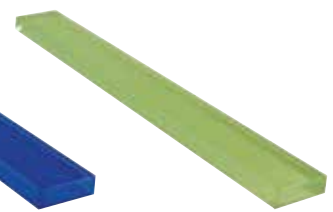
### 8in Liners



Light Blue  
T580



Blue  
T581



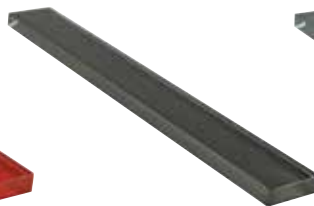
Light Green  
T582



Teal  
T584



Red  
T585



Charcoal  
T587



Gray  
T588



Black  
T589



Spring  
T592



Desert  
T593



True White  
T594



Tan  
T595



Chocolate  
T597

**Sizes:** 1" x 2" / 2.54 x 5.08 cm (± nominal), 0.315" (0.79 cm) thick, Square foot per case: 10.7, Square foot per sheet: 1.07, Sheets/Case: 10, Case Weight: 39.55 lbs

**Mounting:** 12.19" x 12.19" sheets mesh-backed mounted | **Grout Joint:** 1/8" (0.32 cm)

**Sizes:** 1" x 1" / 2.54 x 2.54 cm (± nominal), 0.315" (0.79 cm) thick, Square foot per case: 11.2, Square foot per sheet: 1.12, Sheets/Case: 10, Case Weight: 39.55 lbs

**Mounting:** 12.69" x 12.69" sheets mesh-backed mounted | **Grout Joint:** 1/8" (0.32 cm)

**Sizes:** 1" x 8" / 2.54 x 20.32 cm (± nominal), 0.315" (0.79 cm) thick, Square foot per case: N/A, Square foot per sheet: N/A, Pieces/Case: 60,

Case Weight: 13 lbs | **Mounting:** 1" x 8" loose | **Grout Joint:** 1/8" (0.32 cm)

For installation instructions visit: [DTiles.com](http://DTiles.com)



## Dimensions Series

### Subway



Chocolate  
T572 (3 x 6), T535 (4 x 8), T617 (2 x 12)  
T637 (3 x 12), T657 (4 x 16), (6 x 12)\*



Desert  
T575 (3 x 6), T538 (4 x 8), T613 (2 x 12)  
T633 (3 x 12), T653 (4 x 16), (6 x 12)\*



True White  
T576 (3 x 6), T539 (4 x 8), T614 (2 x 12)  
T634 (3 x 12), T654 (4 x 16), (6 x 12)\*



Black  
T569 (3 x 6), T489 (4 x 8), T609 (2 x 12)  
T629 (3 x 12), T649 (4 x 16), (6 x 12)\*



Red  
T565 (3 x 6), T485 (4 x 8), T604 (2 x 12)  
T624 (3 x 12), T644 (4 x 16), (6 x 12)\*



Light Green  
T562 (3 x 6), T482 (4 x 8), T602 (2 x 12)  
T622 (3 x 12), T642 (4 x 16), (6 x 12)\*



Teal  
T564 (3 x 6), T484 (4 x 8), T603 (2 x 12)  
T623 (3 x 12), T643 (4 x 16), (6 x 12)\*



Blue  
T561 (3 x 6), T481 (4 x 8), T601 (2 x 12)  
T621 (3 x 12), T641 (4 x 16), (6 x 12)\*

The following size formats are available in all colors including Linen.



3 x 6



4 x 8



2 x 12



3 x 12



4 x 16

**Sizes:** See page 22 for individual subway tile specifications

**Mounting:** Loose | **Grout Joint:** 1/8" (0.32 cm)

**Sizes:** 3" x 6", 4" x 8", 2" x 12", 3" x 12", 6" x 12" available through special order only, 4" x 16"

For installation instructions visit: [DTiles.com](http://DTiles.com)

# Dimensions Series - Linen Specifications

## Application

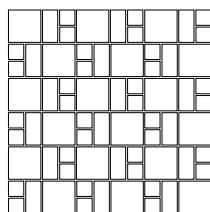
|                    | Residential | Light Commercial | Commercial |
|--------------------|-------------|------------------|------------|
| Walls/Backsplashes | X           | X                | X          |
| Pool Linings       | X           | X                | X          |

All tiles may be used as field tile or as decorative inserts. Follow the recommendation of the TCNA (Tile Council of North America) Handbook and reference the specifications that apply to your project.

## Sizes

### LINEN STYLE FORMATS ONLY

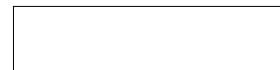
- Block Pattern  
11.75" x 11.75" / 29.85 x 29.85 cm sheets  
0.315" (0.79 cm) thick, Mesh-mounted  
Square foot per case: 9.4  
Square foot per sheet: 0.94  
Sheets per case: 10  
Case Weight: 33.4 lbs



- 3" x 12" / 7.62 x 30.48 cm  
0.315" (0.79 cm) thick, Loose  
Square foot per case: 3.6  
Pieces per case: 15  
Case Weight: 15.3 lbs



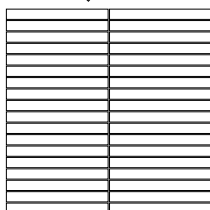
- 4" x 16" / 10.16 x 40.64 cm  
0.315" (0.79 cm) thick, Loose  
Square foot per case: 6.6  
Pieces per case: 15  
Case Weight: 26.7 lbs



- 6" x 12" / 15.24 x 30.48 cm\*  
0.315" (0.79 cm) thick, Loose  
Square foot per case: N/A  
Pieces per case: N/A  
Case Weight: N/A  
\*AVAILABLE SPECIAL ORDER ONLY.  
CALL 800-937-9593 FOR SPECIFICATIONS.



- 5/8" x 6" / 1.59 cm x 15.24 cm  
11.94" x 11.88" / 30.3 x 30.2 cm sheets  
0.315" (0.79 cm) thick, Mesh-mounted  
Square foot per case: 9.8  
Square foot per sheet: 0.98  
Sheets per case: 10  
Case Weight: 33.3 lbs



- 3" x 6" / 7.62 x 15.24 cm  
0.315" (0.79 cm) thick, Loose  
Square foot per case: 4.32  
Pieces per case: 36  
Case Weight: 18.65 lbs



- 2" x 12" / 5.08 x 30.48 cm  
0.315" (0.79 cm) thick, Loose  
Square foot per case: 4.96  
Pieces per case: 31  
Case Weight: 20.6 lbs



Grout Joint: 1/8" (0.32 cm)

## Test Results

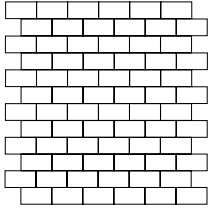
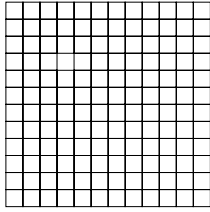
|                     | ASTM# | Results   |
|---------------------|-------|-----------|
| Water Absorption    | C373  | 00.00%    |
| Breaking Strength   | C648  | >100      |
| Scratch Hardness    | MOH'S | 6         |
| Chemical Resistance | C650  | Resistant |

# Dimensions Series Specifications

## Sizes

### ORIGINAL DIMENSIONS STYLE FORMATS

- 1" x 1" / 2.54 x 2.54 cm (± nominal)  
12.69" x 12.69" / 32.23 x 32.23 cm sheets  
0.315" (0.79 cm) thick, Mesh-mounted  
Square foot per case: 11.2  
Square foot per sheet: 1.12  
Sheets per case: 10  
Case Weight: 39.55 lbs
- 1" x 2" / 2.54 cm x 5.08 cm (± nominal)  
12.19" x 12.63" / 30.96 x 32.08 cm sheets  
0.315" (0.79 cm) thick, Mesh-mounted  
Square foot per case: 10.7  
Square foot per sheet: 1.07  
Sheets per case: 10  
Case Weight: 39.55 lbs
- 3" x 6" / 7.62 x 15.24 cm (± nominal)  
0.315" (0.79 cm) thick, Loose  
Square foot per case: 12  
Pieces per case: 100  
Case Weight: 52 lbs
- 1" x 8" / 2.54 x 20.32 cm (± nominal)  
0.315" (0.79 cm) thick, Loose  
Square foot per case: N/A  
Pieces per case: 60  
Case Weight: 13 lbs
- 4" x 8" / 10.16 x 20.32 cm (± nominal)  
0.315" (0.79 cm) thick, Loose  
Square foot per case: 10.5  
Pieces per case: 50  
Case Weight: 45 lbs
- 2" x 12" / 5.08 x 30.48 cm (± nominal)  
0.315" (0.79 cm) thick, Loose  
Square foot per case: 7.14  
Pieces per case: 42  
Case Weight: 29.15 lbs



- 3" x 12" / 7.62 x 30.48 cm (± nominal)  
0.315" (0.79 cm) thick, Loose  
Square foot per case: 7  
Pieces per case: 28  
Case Weight: 28.5 lbs
- 4" x 16" / 10.16 x 40.64 cm (± nominal)  
0.315" (0.79 cm) thick, Loose  
Square foot per case: 7.92  
Pieces per case: 18  
Case Weight: 31.15 lbs
- 6" x 12" / 15.24 x 30.48 cm (± nominal)\*  
0.315" (0.79 cm) thick, Loose  
Square foot per case: N/A  
Pieces per case: N/A  
Case Weight: N/A  
\*AVAILABLE SPECIAL ORDER ONLY.  
CALL 800-937-9593 FOR SPECIFICATIONS.



Grout Joint: 1/8" (0.32 cm)

## Test Results

|                     | ASTM# | Results   |
|---------------------|-------|-----------|
| Water Absorption    | C373  | 00.00%    |
| Breaking Strength   | C648  | >100      |
| Scratch Hardness    | MOH'S | 6         |
| Chemical Resistance | C650  | Resistant |



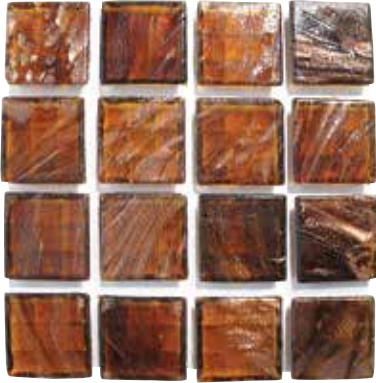


## Mosaic Series

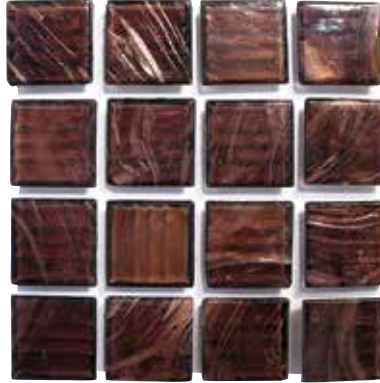
These extraordinary tiles have a distinctive brilliance. Their smooth fronts allow for extraordinary color, while their textured backs make for a better adhesive grip. Available in mixes, transparents, iridized, gold and color swirls, these 3/4" tiles will set the stage for creative drama in any living environment.

# Mosaic Series

## Gold Swirls



Dark Brown  
T200G



Medium Amber  
T204G

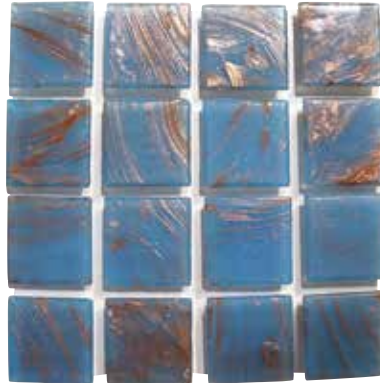


Dark Amber  
T207G

## Color Swirls



Clear  
T220G



Blue/Gray  
T226G



Burgundy\*  
T234C

## Transparents



Bottle Blue\*  
T242CL



Royal Blue\*  
T243CL

## Iridized



Iridized White\*  
T252I

**Sizes:** 0.75" x 0.75" / 1.9 x 1.9 cm (± nominal), 1/8" (0.32 cm) thick, Square foot per case: 20, Square foot per sheet: 1, Sheets/Case: 20, Case Weight: 29 lbs  
**Mounting:** 12" x 12" sheets paper-front mounted. (\*) Indicates a mesh-back product | **Grout Joint:** 1/8" (0.32 cm)

For installation instructions visit: [DTiles.com](http://DTiles.com)



## Mosaic Series

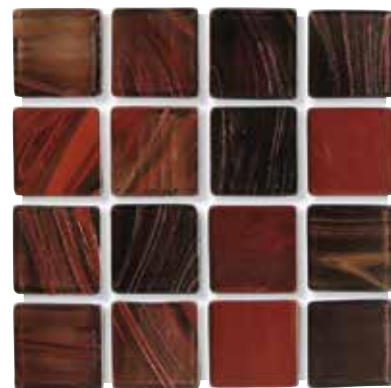
### Mixes



Mediterranean  
T351



Peonies\*  
T354



Pompeii  
T355



Atlantis  
T356



Mosaics T351 Mediterranean

**Sizes:** 0.75" x 0.75" / 1.9 x 1.9 cm (± nominal), 1/8" (0.32 cm) thick, Square foot per case: 20, Square foot per sheet: 1, Sheets/Case: 20, Case Weight: 29 lbs  
**Mounting:** 12" x 12" sheets paper-front mounted. (\*) Indicates a mesh-back product | **Grout Joint:** 1/8" (0.32 cm)

For installation instructions visit: [DTiles.com](http://DTiles.com)



# Mosaics Series Specifications

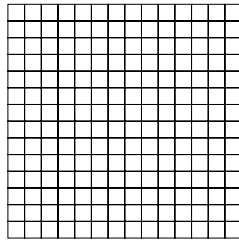
## Application

|                    | Residential | Light Commercial | Commercial |
|--------------------|-------------|------------------|------------|
| Walls/Backsplashes | X           | X                | X          |
| Counters           | X           |                  |            |
| Pool Linings       | X           | X                | X          |

All tiles may be used as field tile or as decorative inserts. Follow the recommendation of the TCNA (Tile Council of North America) Handbook. Please reference the specifications that apply to your project.

## Sizes

- 3/4" x 3/4" / 1.9 cm x 1.9 cm (± nominal)
- 12" x 12" / 30 x 30 cm sheets
- 1/8" (0.32 cm) thick, Paper-front mounted
- \* Indicates a mesh-backed product
- Square foot per case: 20
- Square foot per sheet: 1
- Sheets per case: 20
- Case Weight: 29 lbs



Grout Joint: 1/8" (0.32 cm)

## Test Results

|                     | ASTM# | Results   |
|---------------------|-------|-----------|
| Water Absorption    | C373  | 00.00%    |
| Breaking Strength   | C648  | >100      |
| Scratch Hardness    | MOH'S | >4        |
| Chemical Resistance | C650  | Resistant |



## Platinum Series

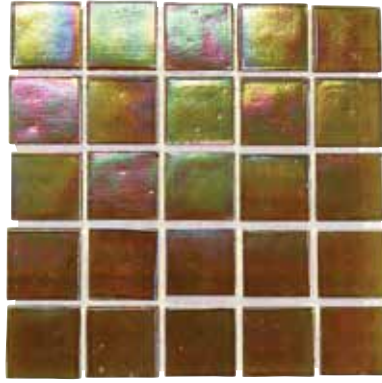
Transparent and semi-transparent mosaic glass tiles distinguishable by their special light reflective surface. Create dramatic effects with Platinum's ever changing surface effects.



## Platinum Series



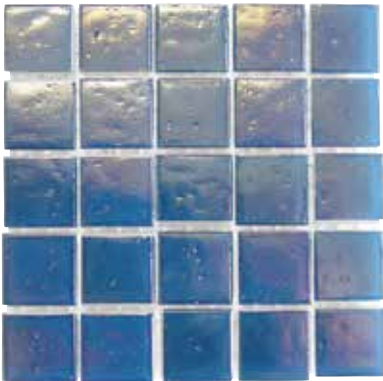
White  
T400



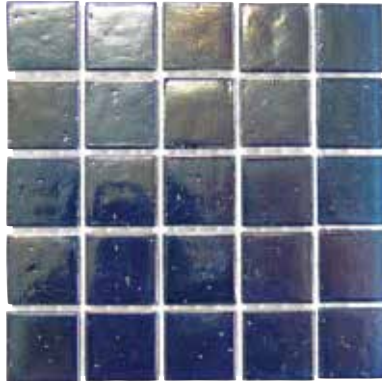
Honey Mist \*  
T405



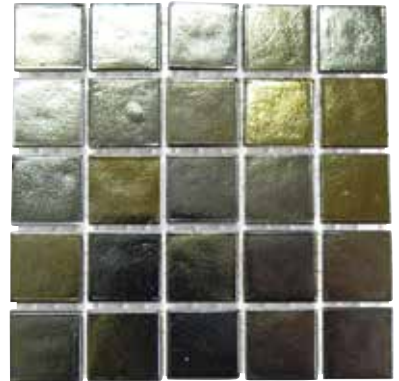
Celadon Swirl  
T408



Light Blue  
T414



Blue  
T415



Gold & Silver  
T416



Platinum T416 Gold & Silver

**Sizes:** 9/16" x 9/16" / 1.5 x 1.5 cm (± nominal), 1/8" (0.32 cm) thick, Square foot per case: 21.8, Square foot per sheet: 1.09, Sheets/Case: 20, Case Weight: 26 lbs  
**Mounting:** 12.5" x 12.5" sheets paper-faced mounted. (\*) Indicates a mesh-back product | **Grout Joint:** 3/32" (0.24 cm)

For installation instructions visit: [DTiles.com](http://DTiles.com)



# Platinum Series Specifications

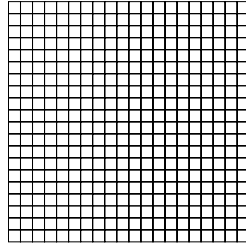
## Application

|                    | Residential | Light Commercial | Commercial |
|--------------------|-------------|------------------|------------|
| Walls/Backsplashes | X           | X                | X          |
| Counters           | X           |                  |            |
| Pool Linings       | X           | X                | X          |

All tiles may be used as field tile or as decorative inserts. Follow the recommendation of the TCNA (Tile Council of North America) Handbook. Please reference the specifications that apply to your project.

## Sizes

- 9/16" x 9/16" / 1.5 x 1.5 cm (± nominal)  
12.5" x 12.5" / 31.75 x 31.75 cm sheets  
1/8" (0.32 cm) thick, Paper-front mounted  
\* Indicates a mesh-backed product  
Square foot per case: 21.8  
Square foot per sheet: 1.09  
Sheets/Case: 20  
Case Weight: 26 lbs



Grout Joint: 3/32" (0.24 cm)

## Test Results

|                     | ASTM# | Results   |
|---------------------|-------|-----------|
| Water Absorption    | C373  | 00.00%    |
| Breaking Strength   | C648  | >100      |
| Scratch Hardness    | MOH'S | >4        |
| Chemical Resistance | C650  | Resistant |



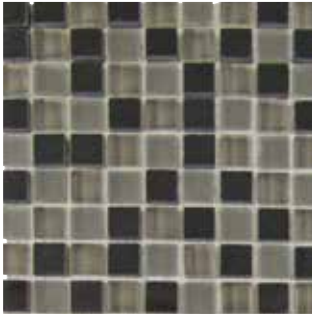
## Impact Series

A stunning fusion of translucent and diffused glass with natural stone and metal tiles. The unique look of Impact bursts onto today's design scene, creating a new tile sensation.

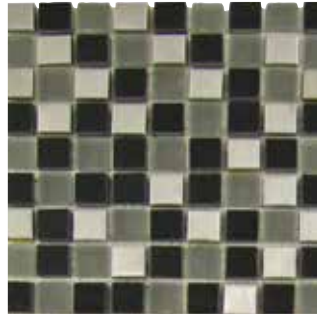


# Impact Series

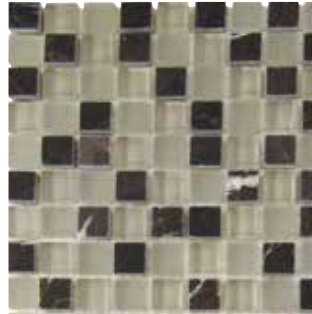
## 5/8in Mosaic



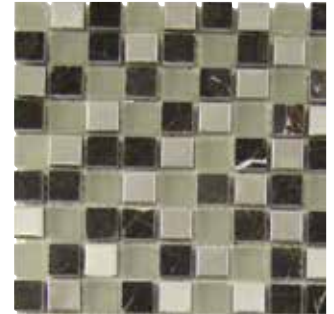
Nocturn  
T870



Nocturn  
T870Metal



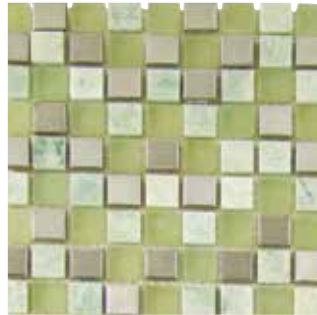
French Roast  
T873



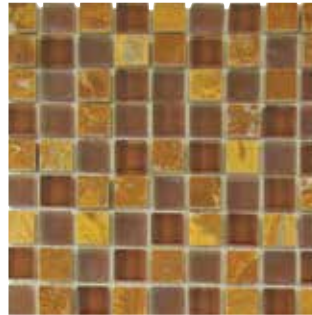
French Roast  
T873Metal



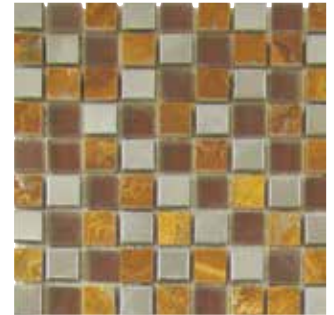
Green Tea  
T876



Green Tea  
T876Metal



Parchment  
T879



Parchment  
T879Metal



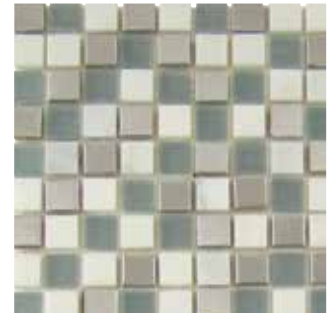
Cirrus  
T882



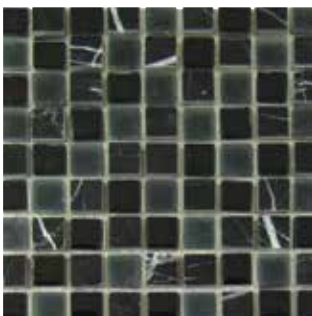
Cirrus  
T882Metal



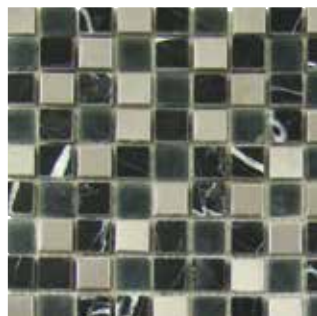
Storm  
T885



Storm  
T885Metal



Midnight  
T888



Midnight  
T888Metal



Image depicts a full sheet.

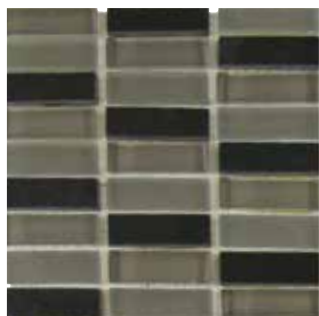
**Sizes:** 9/16" x 9/16" / 1.4 x 1.4 cm (± nominal), 0.312" (0.79 cm) thick, Square foot per case: 5, Square foot per sheet: 1, Sheets/Case: 5, Case Weight: 14.3 lbs  
**Mounting:** 12" x 12" sheets mesh-backed mounted | **Grout Joint:** 1/8" (0.32 cm)

For installation instructions visit: [DTiles.com](http://DTiles.com)

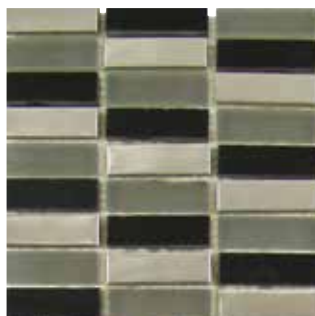


# Impact Series

## 1 7/8in x 5/8in Stack



Nocturn  
T871



Nocturn  
T871Metal



French Roast  
T874



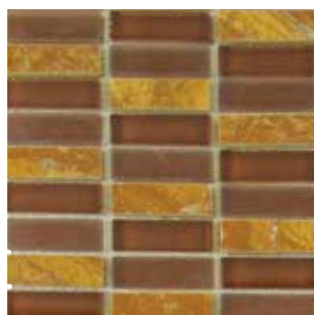
French Roast  
T874Metal



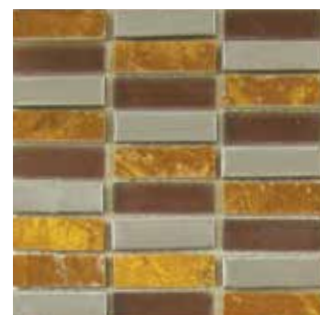
Green Tea  
T877



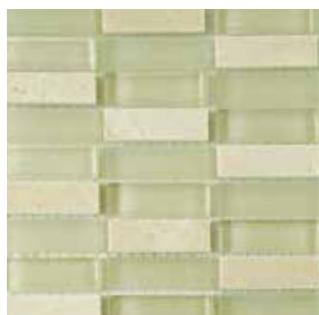
Green Tea  
T877Metal



Parchment  
T880



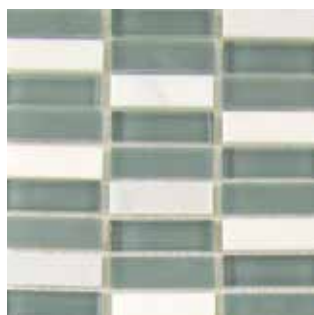
Parchment  
T880Metal



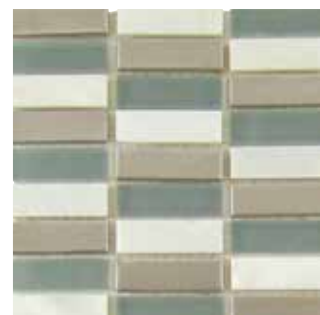
Cirrus  
T883



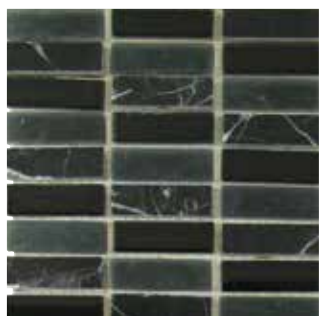
Cirrus  
T883Metal



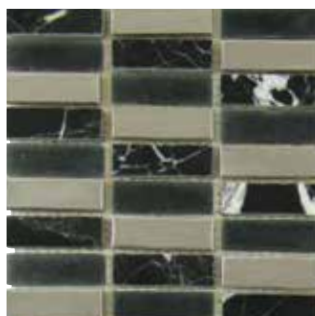
Storm  
T886



Storm  
T886Metal



Midnight  
T889



Midnight  
T889Metal



Image depicts a full sheet.

**Sizes:** 1 7/8" x 9/16" / 4.7 x 1.4 cm (± nominal), 0.312" (0.79 cm) thick, Square foot per case: 4.9, Square foot per sheet: 0.98, Sheets/Case: 5, Case Weight: 16.4 lbs  
**Mounting:** 12" x 11.75" sheets mesh-backed mounted | **Grout Joint:** 1/8" (0.32 cm)

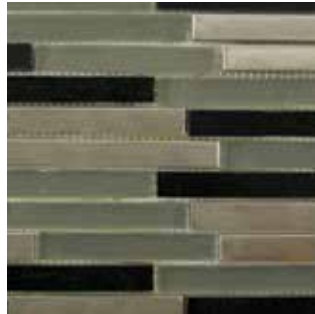
For installation instructions visit: [DTiles.com](http://DTiles.com)

# Impact Series

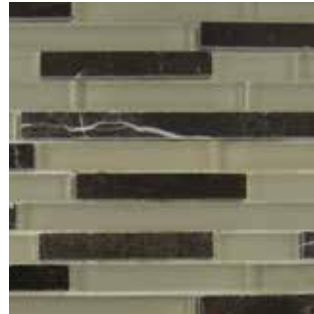
## Staggered



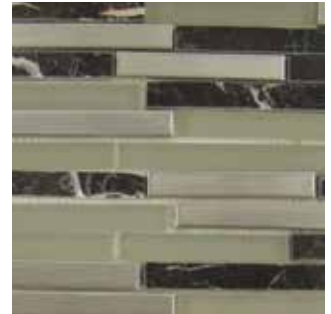
Nocturn  
T872



Nocturn  
T872Metal



French Roast  
T875



French Roast  
T875Metal



Green Tea  
T878



Green Tea  
T878Metal



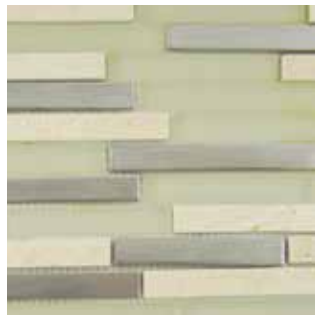
Parchment  
T881



Parchment  
T881Metal



Cirrus  
T884



Cirrus  
T884Metal



Storm  
T887



Storm  
T887Metal



Midnight  
T890



Midnight  
T890Metal



Image depicts a full sheet.

**Sizes:** 1 7/8" x 5/8", 3 13/16" x 5/8", 7 3/4" x 5/8" / 4.7 x 1.6 cm, 9.7 x 1.6 cm, 19.7 x 1.6 cm (± nominal), 0.312" (0.79 cm) thick, Square foot per case: 4.9, Square foot per sheet: 0.98, Sheets/Case: 5, Case Weight: 17 lbs | **Mounting:** 12" x 11.75" sheets mesh-backed mounted | **Grout Joint:** 1/8" (0.32 cm)

For installation instructions visit: [DTiles.com](http://DTiles.com)

# Impact Series Specifications

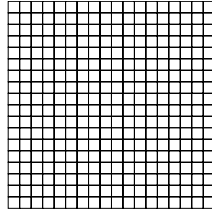
## Application

|                    |             |                  |            |
|--------------------|-------------|------------------|------------|
|                    | Residential | Light Commercial | Commercial |
| Walls/Backsplashes | X           | X                | X          |

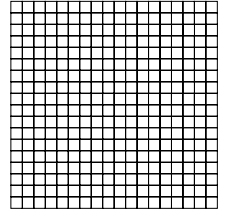
All tiles may be used as field tile or as decorative inserts. Follow the recommendation of the TCNA (Tile Council of North America) or the MIA (Marble Institute of America). Please reference the specifications that apply to your project. Impact containing metal is not recommended in shower stalls or surrounds. Nor is it for use in outdoor applications, high moisture areas or bathroom and kitchen floors where water puddling may occur.

## Sizes

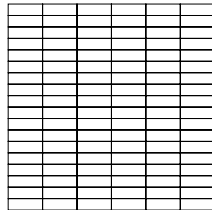
- 5/8" Squares  
9/16" x 9/16" / 1.4 x 1.4 cm (± nominal)  
12" x 12" / 30 x 30 cm sheets  
0.312" (0.79 cm) thick, Mesh-mounted  
Square foot per case: 5  
Sheets/Case: 5  
Case Weight: 14.3 lbs



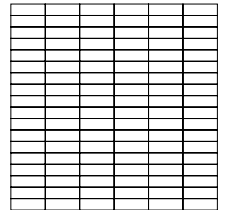
- 5/8" Squares with Metal  
9/16" x 9/16" / 1.4 x 1.4 cm (± nominal)  
12" x 12" / 30 x 30 cm sheets  
0.312" (0.79 cm) thick, Mesh-mounted  
Square foot per case: 5  
Sheets/Case: 5  
Case Weight: 14.3 lbs



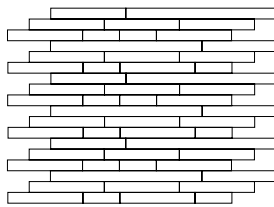
- 1 7/8" x 5/8" Stacked  
1 7/8" x 9/16" / 4.7 x 1.4 cm (± nominal)  
12" x 11.75" / 30 x 29.8 cm sheets  
0.312" (0.79 cm) thick, Mesh-mounted  
Square foot per case: 4.9  
Sheets/Case: 5  
Case Weight: 16.4 lbs



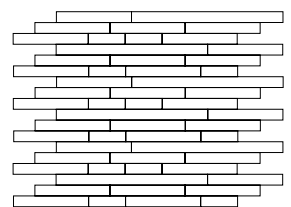
- 1 7/8" x 5/8" Stacked with Metal  
1 7/8" x 9/16" / 4.7 x 1.4 cm (± nominal)  
12" x 11.75" / 30 x 29.8 cm sheets  
0.312" (0.79 cm) thick, Mesh-mounted  
Square foot per case: 4.9  
Sheets/Case: 5  
Case Weight: 15.4 lbs



- Staggered  
1 7/8" x 5/8" / 4.7 x 1.6 cm (± nominal)  
3 13/16" x 5/8" / 9.7 x 1.6 cm  
7 3/4" x 5/8" / 19.7 x 1.6 cm  
12" x 11.75" / 30 x 29.8 cm sheets  
0.312" (0.79 cm) thick, Mesh-mounted  
Square foot per case: 4.9  
Sheets/Case: 5  
Case Weight: 17.1 lbs



- Staggered with Metal  
1 7/8" x 5/8" / 4.7 x 1.6 cm (± nominal)  
3 13/16" x 5/8" / 9.7 x 1.6 cm  
7 3/4" x 5/8" / 19.7 x 1.6 cm  
12" x 11.75" / 30 x 29.8 cm sheets  
0.312" (0.79 cm) thick, Mesh-mounted  
Square foot per case: 4.9  
Sheets/Case: 5  
Case Weight: 17 lbs



**Grout Joint:** 1/8" (0.32 cm)

**NOTE:** The Impact Series is a combination of glass, metal and natural stone. Variations in color, shade and sizes are inherent in all fired glass products. Stone is a natural product therefore, no two pieces are exactly alike. This variation is what gives natural stone products their distinctive appearance. SKU's designated with "Metal" contain stainless steel tile on a ceramic base. Final selection should be made from actual tiles and not from color reproductions.





## Travertine-Glass Series

This Series combines the warm, rugged feel of stone with the sleek, multi-dimensional look of glass for an uncomplicated natural combination. Each sheet of tile harmoniously blends 1" x 1" travertine with 1" x 1" 8 mm translucent glass tile, to merge old-world charm with modern edginess.

## Travertine-Glass Series

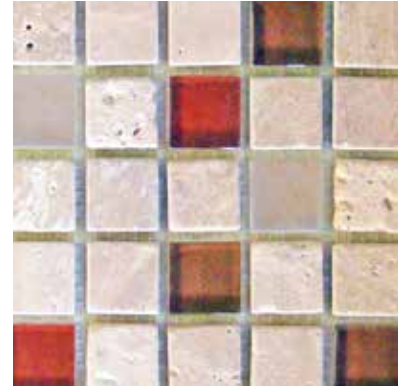
### 1in x 1in Mosaic



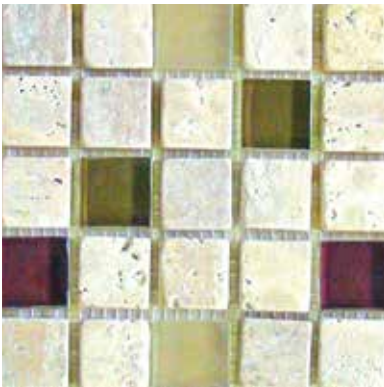
Cool Blues  
TT109



Fennel  
TT110



Auburn  
TT111



River Rouge  
TT112



Exotic Plum  
TT113



Lagoon  
TT114



Fossil  
TT115



Travertine & Glass TT111 Auburn

**Sizes:** 1" x 1" / 2.54 x 2.54 cm (± nominal), 0.315" (0.79 cm) thick, Square foot per case: 5, Square foot per sheet: 1, Sheets/Case: 5, Case Weight: 16.1 lbs  
**Mounting:** 12" x 12" sheets mesh-backed mounted | **Grout Joint:** 1/8" (0.32 cm)

For installation instructions visit: [DTiles.com](http://DTiles.com)

# Travertine-Glass Series Specifications

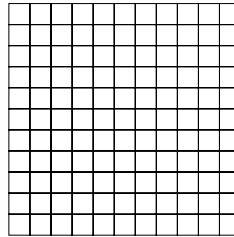
## Application

|                    | Residential | Light Commercial | Commercial |
|--------------------|-------------|------------------|------------|
| Walls/Backsplashes | X           | X                | X          |
| Counters           | X           |                  |            |
| Pool Linings       | X           | X                | X          |

All tiles may be used as field tile or as decorative inserts. Follow the recommendation of the TCNA (Tile Council of North America) Handbook. Please reference the specifications that apply to your project.

## Sizes

- 1" x 1" / 2.54 cm x 2.54 cm (± nominal)
- 12" x 12" / 30.48 x 30.48 cm sheets
- 0.315" (0.79 cm) thick, Mesh-mounted
- Square foot per case: 5
- Square foot per sheet: 1
- Sheets/Case: 5
- Case Weight: 16.1 lbs.



Grout Joint: 1/8" (0.32 cm)

## Test Results

|                         | ASTM#    | Results       |
|-------------------------|----------|---------------|
| Water Absorption        | C373     | 00.00% < 0.5% |
| Breaking Strength       | C648     | >1000 lbs.    |
| Scratch Hardness        | MOH'S    | >4            |
| Chemical Resistance     | C650     | Resistant     |
| Coefficient of Friction | C1028VWU | (>)0.60       |

**NOTE:** The Travertine/Glass Series is a combination of glass and natural stone. Variations in color, shade and sizes are inherent in all fired glass products. Stone is a natural product therefore, no two pieces are exactly alike. This variation is what gives natural stone products their distinctive appearance. Final selection should be made from actual tiles and not from color reproductions.





## Contours Series

The Contours Series provides pattern and texture that exceed natural stone. Its sophisticated textural appearance brings a softer side to modern style. Available in five distinctive facial reliefs in four popular stone colors.

# Contours Series

## **Classical** - Random Brick Honed Split Faced Stone



Dark Emperor  
T900



Crema Marfil  
T901

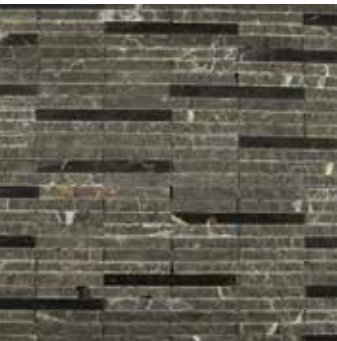


Statuary White  
T902



Light Emperor  
T903

## **Ionic** - Linear Polished and Honed Stone



Dark Emperor  
T912



Crema Marfil  
T913

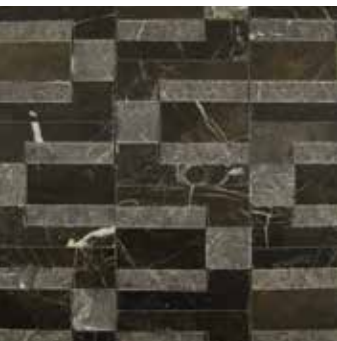


Statuary White  
T914



Light Emperor  
T915

## **Doric** - Interlocking Modul Polished and Honed Stone



Dark Emperor  
T916



Crema Marfil  
T917



Statuary White  
T918



Light Emperor  
T919

**Sizes:** 11/16" / 1.75 cm (± nominal) thick, Square foot per case: 5, Square foot per sheet: 1, Sheets/Case: 5, Case Weight: 27.2 lbs | **Mounting:** 12" x 12" sheets mesh-backed mounted

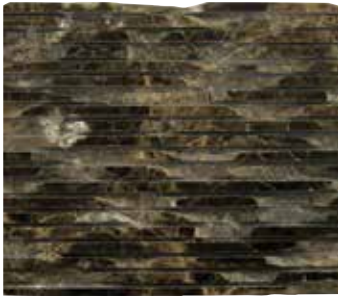
**Sizes:** 15/32" / 1.19 cm (± nominal) thick, Square foot per case: 5, Square foot per sheet: 1, Sheets/Case: 5, Case Weight: 26.2 lbs | **Mounting:** 12" x 12" sheets mesh-backed mounted

**Sizes:** 3/8" / 1 cm (± nominal) thick, Square foot per case: 5, Square foot per sheet: 1, Sheets/Case: 5, Case Weight: 25.8 lbs **Mounting:** 12" x 12" sheets mesh-backed mounted - interlocking



# Contours Series

## Antiquity - Chiseled Honed Stone



Dark Emperador  
T920



Crema Marfil  
T921



Statuary White  
T922



Light Emperador  
T923

## Tuscan - Parquet Honed Stone



Dark Emperador  
T924



Crema Marfil  
T925



Statuary White  
T926



Light Emperador  
T927



Contours Doric T918 White Statuary

**Sizes:** 1/2" / 1.27 cm (± nominal) thick, Square foot per case: 5, Square foot per piece: 0.5, Pieces/Case: 10, Case Weight: 26.2 lbs | **Mounting:** 12" x 6" sheets mesh-backed mounted  
**Sizes:** 15/32" / 1.19 cm (± nominal) thick, Square foot per case: 5, Square foot per sheet: 1, Sheets/Case: 5, Case Weight: 27.06 lbs | **Mounting:** 12" x 12" sheets mesh-backed mounted



# Contours Series Specifications

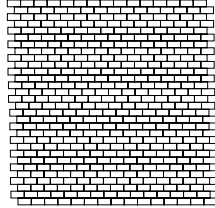
## Application

|                    |             |                  |            |
|--------------------|-------------|------------------|------------|
|                    | Residential | Light Commercial | Commercial |
| Walls/Backsplashes | X           | X                | X          |

All tiles may be used as field tile. Follow the installation recommendation of the TCNA (Tile Council of North America) or the MIA (Marble Institute of America). Please reference the specifications that apply to your project. Contours is not recommended in showers. It is also not suitable for floors.

## Sizes

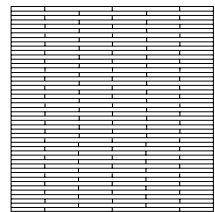
- Classical  
12" x 12" / 30 x 30 cm  
11/16" / 1.75 cm (± nominal) thick  
Mesh-mounted  
Square foot per case: 5  
Sheets/Case: 5  
Case Weight: 27.20 lbs



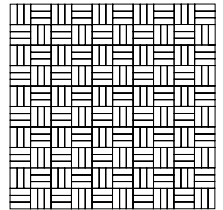
- Antiquity  
12" x 6" / 30 x 15.24 cm  
1/2" / 1.27 cm (± nominal) thick  
Loose  
Square foot per case: 5  
Pieces/Case: 10  
Case Weight: 26.20 lbs



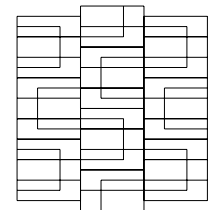
- Ionic  
12" x 12" / 30 x 30 cm  
15/32" / 1.19 cm (± nominal) thick  
Mesh-mounted  
Square foot per case: 5  
Sheets/Case: 5  
Case Weight: 26.20 lbs



- Tuscan  
12" x 12" / 30 x 30 cm  
15/32" / 1.19 cm (± nominal) thick  
Mesh-mounted  
Square foot per case: 5  
Sheets/Case: 5  
Case Weight: 27.06 lbs



- Doric  
12" x 12" / 30 x 30 cm  
3/8" / 1 cm (± nominal) thick  
Mesh-mounted - Interlocking  
Square foot per case: 5  
Sheets/Case: 5  
Case Weight: 25.80 lbs



**NOTE:** The Contours Series is a natural stone product. No two pieces are exactly alike. This variation is what gives natural stone products their distinctive appearance.



## Stone Series

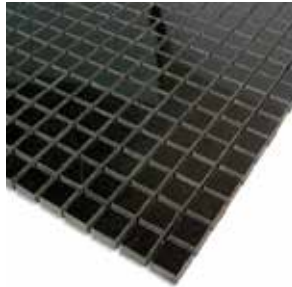
Surround yourself with the luxurious warmth found in our Stone Series - mosaics and accents. Natural Stone is synonymous with elegance. Warm hues combine easily with other materials to provide endless design possibilities. Whether one is looking to achieve a contemporary, or classic atmosphere our Stone Series will meet the design challenge.

## Stone Series

### 5/8in Mosaic



Amber Rouge (Polished)  
T700



Black Marble (Polished)  
T701



China White (Polished)  
T702



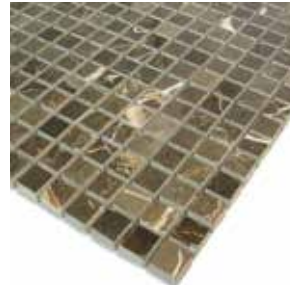
China White (Honed)  
T703



Crema Marfil (Polished)  
T704



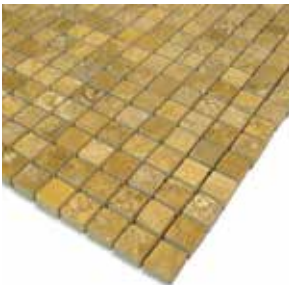
Crema Marfil (Honed)  
T705



Emperador Dark (Polished)  
T706



Gold Travertine (Polished)  
T707



Gold Travertine (Honed)  
T708



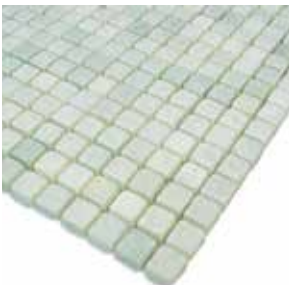
Honey Onyx (Polished)  
T709



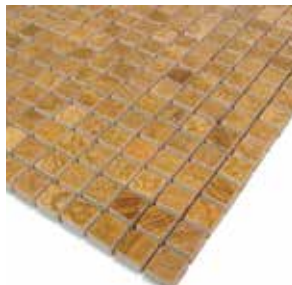
Honey Onyx (Tumbled)  
T710



Ming Green (Polished)  
T711



Ming Green (Tumbled)  
T712



Timber Marble (Tumbled)  
T714



White Statuary (Polished)  
T715



White Statuary (Honed)  
T716

**Sizes:** 5/8" x 5/8" / 1.59 x 1.59 cm (± nominal), 3/8" (1 cm) thick, Square foot per case: 5, Square foot per sheet: 1, Sheets/Case: 5, Case Weight: 19.75 lbs  
**Mounting:** 12" x 12" sheets mesh-backed mounted | **Grout Joint:** 1/16" (0.16 cm)

For installation instructions visit: [DTTiles.com](http://DTTiles.com)



## Stone Series

### Mixes 5/8" Mosaic



Honey Onyx / Crema Marfil / Timber  
(Polished) - T725



Crema Marfil / Emperador Dark  
(Polished) - T726



Honey Onyx / Black Marble  
(Polished) - T727



Black Marble / White Statuary  
(Polished) - T728

### 3in x 6in Subway



China White (Polished)  
T760



China White (Honed)  
T761



Crema Marfil (Polished)  
T762



Crema Marfil (Honed)  
T763



Honey Onyx (Polished)  
T764



Honey Onyx (Honed)  
T765



Ming Green (Polished)  
T766



White Statuary (Polished)  
T768



White Statuary (Honed)  
T769

**Sizes:** 5/8" x 5/8" / 1.59 x 1.59 cm (± nominal), 3/8" (1 cm) thick, Square foot per case: 5, Square foot per sheet: 1, Sheets/Case: 5, Case Weight: 19.75 lbs

**Mounting:** 12" x 12" sheets mesh-backed mounted | **Grout Joint:** 1/16" (0.16 cm)

**Sizes:** 2.9" x 5.9" / 7.36 x 14.9 cm (± nominal), 3/8" (1 cm) thick, Square foot per case: 4.75, Square foot per piece: 0.12, Pieces/Case: 40, Case Weight: 25.82 lbs

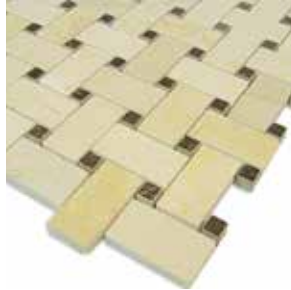
**Mounting:** 3" x 6" piece loose | **Grout Joint:** 1/16" (0.16 cm)

# Stone Series

## Basket Weave



Honey Onyx / Black Marble  
(Polished) - T790



Crema Marfil / Emperador Dark  
(Polished) - T791



China White / Black Marquina  
(Polished) - T792



Honey Onyx / Timber (Polished)  
T793

## Octagon/Dot



Honey Onyx / Black Marble  
(Polished) - T781



Crema Marfil / Emperador  
(Polished) - T782



White Statuary / Black Marquina  
(Polished) - T783

## 1in Hexagon



China White (Polished)  
T740



China White (Honed)  
T741



Crema Marfil (Polished)  
T742



Crema Marfil (Honed)  
T743



Honey Onyx (Polished)  
T744



Honey Onyx (Honed)  
T745



White Statuary (Polished)  
T746



White Statuary (Honed)  
T747

**Sizes:** 1" x 1 7/8" / 2.54 x 2.2 cm, 3/8" x 3/8" / 1 x 1 cm (± nominal), 3/8" (1 cm) thick, Square foot per case: 5, Square foot per sheet: 1, Sheets/Case: 5, Case Weight: 22.88 lbs | **Mounting:** 12" x 12" sheets mesh-backed mounted | **Grout Joint:** 1/16" (0.16 cm)

**Sizes:** 1 7/8" x 1 7/8" / 4.76 x 4.76 cm, 5/8" x 5/8" / 1.59 x 1.59 cm (± nominal), 3/8" (1 cm) thick, Square foot per case: 5, Square foot per sheet: 1, Sheets/Case: 5, Case Weight: 23.06 lbs | **Mounting:** 12" x 12" sheets mesh-backed mounted | **Grout Joint:** 1/16" (0.16 cm)

**Sizes:** 1" / 2.54 cm (± nominal), 3/8" (1 cm) thick, Square foot per case: 5, Square foot per sheet: 1, Sheets/Case: 5, Case Weight: 19.1 lbs

**Mounting:** 12" x 12" sheets mesh-backed mounted | **Grout Joint:** 1/16" (0.16 cm)

For installation instructions visit: [DTiles.com](http://DTiles.com)

## Stone Series

### 12in x 3/4in Pencils



Amber Rouge (Polished)  
T820



Black Marble (Polished)  
T821



China White (Polished)  
T822



Crema Marfil (Polished)  
T823



Emperador Dark (Polished)  
T824



Gold Travertine (Polished)  
T825



Honey Onyx (Polished)  
T827



Ming Green (Polished)  
T828



Timber Marble (Polished)  
T830



White Statuary (Polished)  
T831



Image depicts a full sized pencil.



Stone Hexagon T740 China White

**Sizes:** 12" x 3/4" / 30 x 1.9 cm (± nominal), 3/4" (1.9 cm) thick, Linear foot per case: 30, Linear foot per piece: 1, Pieces/Case: 30, Case Weight: 17.88 lbs  
**Mounting:** 12" x 3/4" loose | **Grout Joint:** 1/16" (0.16 cm)

For installation instructions visit: [DTiles.com](http://DTiles.com)



## Stone Series

### 12in x 1 1/8in Chair Rails



Amber Rouge (Polished)  
T801



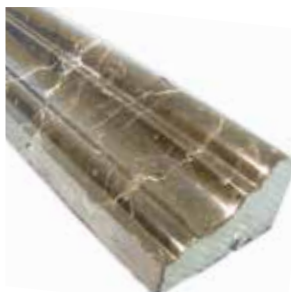
Black Marble (Polished)  
T802



China White (Polished)  
T803



Crema Marfil (Polished)  
T804



Emperador Dark (Polished)  
T805



Gold Travertine (Polished)  
T806



Honey Onyx (Polished)  
T808



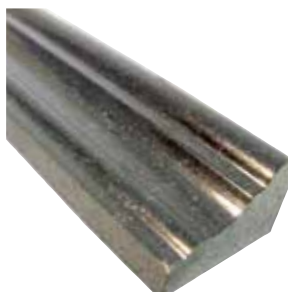
Ming Green (Polished)  
T809



Timber Marble (Polished)  
T811



White Statuary (Polished)  
T812



Black Granite (Polished)  
T813



Image depicts a full sized chair rail

**Sizes:** 12" x 1 1/8" / 30 x 1.9 cm (± nominal), 1" (2.54 cm) thick, Linear foot per case: 10, Linear foot per piece: 1, Pieces/Case: 10, Case Weight: 14.5 lbs  
**Mounting:** 12" x 1 1/8" loose | **Grout Joint:** 1/16" (0.16 cm)

For installation instructions visit: [DTiles.com](http://DTiles.com)

# Stone Series Specifications

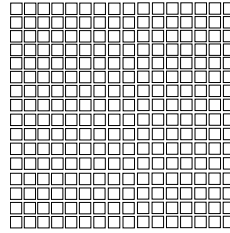
## Application

|                    | Residential | Light Commercial | Commercial |
|--------------------|-------------|------------------|------------|
| Walls/Backsplashes | X           | X                | X          |
| Counters           | X           | X                | X          |
| Floors             | X           | X                |            |

All tiles may be used as field tile or as decorative inserts. Follow the recommendations of the TCNA (Tile Council of North America) or the MIA (Marble Institute of America). Please reference the specifications that apply to your project.

## Sizes

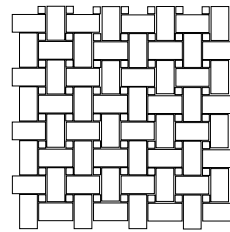
- Squares  
5/8" x 5/8" / 1.59 x 1.59 cm (± nominal)  
12" x 12" / 30 x 30 cm sheets  
3/8" (1 cm) thick, Mesh-mounted  
Square foot per case: 5  
Sheets/Case: 5  
Case Weight: 19.75 lbs



- Rectangles  
2.9" x 5.9" / 7.36 x 14.9 cm (± nominal)  
3/8" (1 cm) thick, Loose  
Square foot per case: 4.75  
PCS/Case: 40  
Case Weight: 25.82 lbs



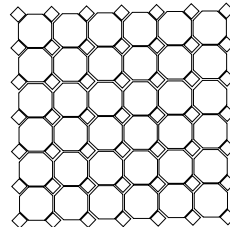
- Basket Weave  
1" x 1 7/8" / 2.54 x 2.2 cm (± nominal)  
3/8" x 3/8" / 1 x 1 cm  
12" x 12" / 30 x 30 cm sheets  
3/8" (1 cm) thick, Mesh-mounted  
Square foot per case: 5  
Sheets/Case: 5  
Case Weight: 22.88 lbs



- Pencils  
12 x 3/4" / 30 x 1.9 cm (± nominal)  
3/4" (1.9 cm) thick, Loose  
Linear foot per case: 30  
PCS/Case: 30  
Case Weight: 17.88 lbs



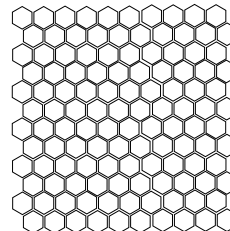
- Octagon/Dot  
1 7/8" x 1 7/8" / 4.76 x 4.76 cm (± nominal)  
5/8" x 5/8" / 1.59 x 1.59 cm  
12" x 12" / 30 x 30 cm sheets  
3/8" (1 cm) thick, Mesh-mounted  
Square foot per case: 5  
Sheets/Case: 5  
Case Weight: 23.06 lbs



- Chair Rails  
12 x 1 3/4" / 30 x 4.44 cm (± nominal)  
1 1/8" thick at its deepest point  
Linear foot per case: 10  
PCS/Case: 10  
Case Weight: 14.5 lbs



- Hexagon  
1" / 2.54 cm (± nominal)  
12" x 12" / 30 x 30 cm sheets  
3/8" (1 cm) thick, Mesh-mounted  
Square foot per case: 5  
Sheets/Case: 5  
Case Weight: 19.1 lbs



**Grout Joint:** 1/16" (0.16 cm)

**NOTE:** The Stone Series is a natural stone product. No two pieces are exactly alike. This variation is what gives natural stone products their distinctive appearance.

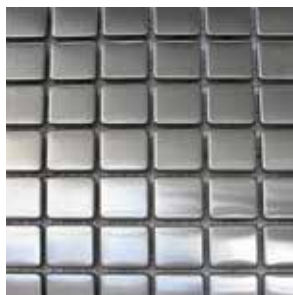


## Metal Series

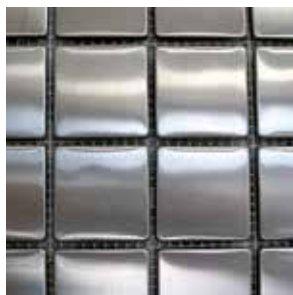
Provides a sleek, stylish, contemporary look to any installation. An attractive alternative to more traditional materials for use in kitchen backsplashes, feature walls or decorative borders, kitchen, or hallway. The fashionable and visually attractive Metal Series consist of a porcelain tile body wrapped in stainless steel for clean geometric looks.



## Metal Series



Small Square Mosaic - 7/8"  
TML01



Medium Square Mosaic - 1 7/8"  
TML02



Rectangles & Squares  
TML03



Rounds  
TML04



Basket Weave  
TML05



Parquet  
TML06



Octagon & Dots  
TML07



Brick  
TML13



Small Hexagon  
TML18



Large Squares - 4"x4"  
TML12



Large Rectangle - 3" x 6"  
TML16



Edger - 1/2" x 6"  
TML17



Edger/Thin Brick  
TML09



Metal TML09 Edger/Thin Brick

**Sizes:** See pages 51 - 52 for individual tile specifications

**Mounting:** Mesh-backed mounted | **Grout Joint:** 1/8" (0.32 cm)

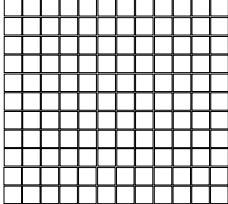
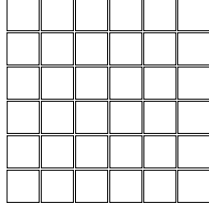
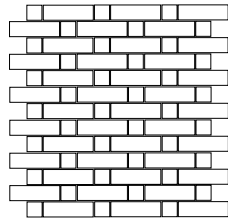
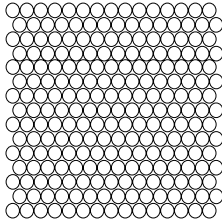
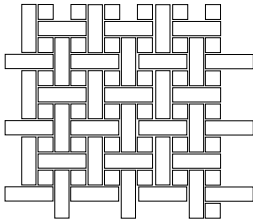

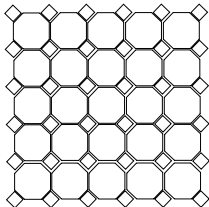
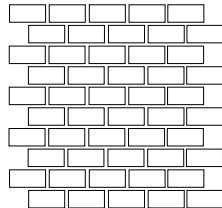
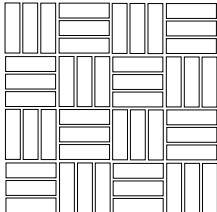
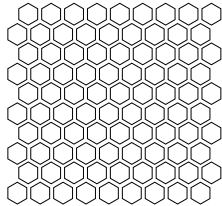

# Metal Series Specifications

## Application

|                    | Residential<br>X | Light Commercial<br>X | Commercial<br>X |
|--------------------|------------------|-----------------------|-----------------|
| Walls/Backsplashes |                  |                       |                 |

All tiles may be used as field tile or as decorative inserts. Follow the recommendation of the TCNA (Tile Council of North America) Handbook. Please reference the specifications that apply to your project. Metal Series is not recommended for shower stalls and surrounds. Nor is it for use in outdoor applications, high moisture areas or bathroom and kitchen floors where puddling may occur.

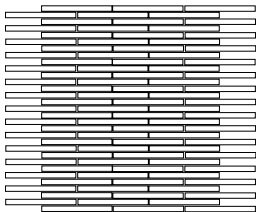
## Sizes

|   |   |   |   |
|---|---|---|---|
| <ul style="list-style-type: none"> <li>Small Squares TML01<br/>7/8" x 7/8" / 2.3 x 2.3 cm (± nominal)<br/>11 5/8" x 11 5/8" / 30 x 30 cm sheets<br/>1/4" (0.6 cm) thick, Mesh-mounted<br/>Square foot per case: 4.70<br/>Sheets/Case: 5<br/>Case Weight: 14 lbs</li> </ul>  |    | <ul style="list-style-type: none"> <li>Medium Squares TML02<br/>1 7/8" x 1 7/8" / 4.76 x 4.76 cm (± nominal)<br/>11 5/8" x 11 5/8" / 30 x 30 cm sheets<br/>1/4" (0.6 cm) thick, Mesh-mounted<br/>Square foot per case: 4.70<br/>Sheets/Case: 5<br/>Case Weight: 19 lbs</li> </ul>     |    |
| <ul style="list-style-type: none"> <li>Rectangles and Small Squares TML03<br/>2 1/2" x 3/4" / 6.35 x 1.9 cm (± nominal)<br/>3/4" x 3/4" / 1.9 x 1.9 cm (± nominal)<br/>10 1/4" x 10 1/4" / 26.2 x 26.2 cm sheets<br/>1/4" (0.6 cm) thick, Mesh-mounted<br/>Square foot per case: 3.65<br/>Sheets/Case: 5<br/>Case Weight: 14 lbs</li> </ul> |   | <ul style="list-style-type: none"> <li>Rounds TML04<br/>3/4" x 3/4" / 1.9 x 1.9 cm (± nominal)<br/>11 7/8" x 11" / 31.4 x 29 cm sheets<br/>1/4" (0.6 cm) thick, Mesh-mounted<br/>Square foot per case: 4.55<br/>Sheets/Case: 5<br/>Case Weight: 14 lbs</li> </ul>                     |    |
| <ul style="list-style-type: none"> <li>Basket Weave TML05<br/>2 1/2" x 3/4" / 6.35 x 1.9 cm (± nominal)<br/>3/4" x 3/4" / 1.9 x 1.9 cm (± nominal)<br/>10 1/4" x 10 1/4" / 26.4 x 26.2 cm sheets<br/>1/4" (0.6 cm) thick, Mesh-mounted<br/>Square foot per case: 3.65<br/>Sheets/Case: 5<br/>Case Weight: 13 lbs</li> </ul>                 |  | <ul style="list-style-type: none"> <li>Large Squares TML12<br/>3 7/8" x 3 7/8" / 9.8 x 9.8 cm (± nominal)<br/>1/4" (0.6 cm) thick, Loose<br/>Square foot per case: 5<br/>Sheets/Case: 50<br/>Case Weight: 18 lbs</li> </ul>   |  |
| <ul style="list-style-type: none"> <li>Octagon &amp; Dots TML07<br/>1 7/8" x 1 7/8" / 4.8 x 4.8 cm (± nominal)<br/>9/16" x 9/16" / 1.43 x 1.43 cm (± nominal)<br/>11 3/4" x 11 3/4" / 29.8 x 29.8 cm sheets<br/>1/4" (0.6 cm) thick, Mesh-mounted<br/>Square foot per case: 4.70<br/>Sheets/Case: 5<br/>Case Weight: 18 lbs</li> </ul>      |  | <ul style="list-style-type: none"> <li>Brick TML13<br/>1 7/8" x 7/8" / 4.8 x 2.2 cm (± nominal)<br/>11 5/8" x 11 5/8" / 29.9 x 29.9 cm sheets<br/>1/4" (0.6 cm) thick, Mesh-mounted<br/>Square foot per case: 4.70<br/>Sheets/Case: 5<br/>Case Weight: 16 lbs</li> </ul>              |  |
| <ul style="list-style-type: none"> <li>Parquet TML06<br/>2 1/2" x 3/4" / 6.35 x 1.9 cm (± nominal)<br/>10 1/4" x 10 1/4" / 26.2 x 26.2 cm sheets<br/>1/4" (0.6 cm) thick, Mesh-mounted<br/>Square foot per case: 3.65<br/>Sheets/Case: 5<br/>Case Weight: 14 lbs</li> </ul>   |  | <ul style="list-style-type: none"> <li>Small Hexagon TML18<br/>1 1/4" x 1 1/4" / 3.2 x 3.2 cm (± nominal)<br/>11 3/16" x 10 7/8" / 28.4 x 27.6 cm sheets<br/>1/4" (0.6 cm) thick, Mesh-mounted<br/>Square foot per case: 4.25<br/>Sheets/Case: 5<br/>Case Weight: 18.4 lbs</li> </ul> |  |
| <ul style="list-style-type: none"> <li>3"x6" TML16<br/>3" x 6" / 7.62 cm x 15.24 cm (± nominal)<br/>5/16" (0.8 cm) thick, Loose<br/>Square foot per case: 6.25<br/>Sheets/Case: 50 pcs<br/>Case Weight: 21 lbs</li> </ul>   |  |   |   |

# Metal Series Specifications

## Sizes

- Edger/Thin Brick TML09  
3 7/8" x 1/2" / 9.8 x 1.3 cm (± nominal)  
11 7/8" x 11 7/8" / 31.8 x 30 cm sheets  
1/4" (0.6 cm) thick, Mesh-mounted  
Square foot per case: 4.90  
Sheets/Case: 5  
Case Weight: 19 lbs



- Edger/Thin Brick TML17  
1/2" x 6" / 1.3 cm x 15.24 cm (± nominal)  
1/4" (0.6 cm) thick, Loose  
Square foot per case: 4  
Pieces/Case: 200 pcs  
Case Weight: 15 lbs



**Grout Joint:** 1/8" (0.32 cm). The rounds have 3/16" (0.476 cm) grout joint





DIAMOND TECH TILES  
WWW.DTTILES.COM  
T1000114 1/14